



ROLLOMATIC LEARNING CENTER

EN

# SUCCESS THROUGH TRAINING

The customer is at the core of Rollomatic's culture. For this reason we developed a corporate strategy designed to help our customers improve performance, productivity and achieve operational excellence. Based on four strategic pillars: Lean Manufacturing, Autonomous Grinding, Smart Factory and Education; the Rollomatic Learning Center training and development program brings together all Rollomatic knowledge. With more than 200 hours of training available in 6 languages on the digital platform or in person at Rollomatic training centers and on customers' production sites, we help customers achieve the next level of knowledge.

This training concept is deployed on four levels that can be combined according to each customer's needs: Digital, Standard, Custom, Expert. Thanks to highly qualified trainers and state-of-the-art teaching resources, you'll be able to master the essential techniques of tool grinding or blank preparation.

## DIGITAL

A panel of some thirty digital modules constitutes the foundation of our training strategy. These modules offer the flexibility you need to train at your own speed and according to your own requirements. They enable you to acquire the basics needed for quality training and optimize the time you spend training with our engineers. Progress at your own pace, according to your schedule and production demands.

## STANDARD

To ensure maximum efficiency, we have developed a catalog of face-to-face training courses, designed to suit different tool types. They enable you to gain the knowledge required to implement the desired tool and can be built on. Choose the training course you need from a large selection of courses.

## CUSTOM

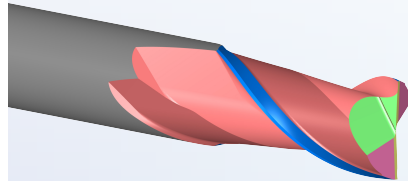
We work with you to design a customized program, perfectly tailored to your specific needs and individual projects. Whether you have specific design needs or wish to master a particular skill, our team is there to support you.

## EXPERT

If you're thinking about further optimizing your processes, our Expert training courses are designed for you. Working closely with our experts, you'll define a customized strategy to enhance your operations and maximize your efficiency. Benefit from our team's experience and know-how to achieve your goals effectively and sustainably.



# GRINDSMART



## ENDMILL Ø6 Z2

001

Carbide, Ø 6 x 57 mm

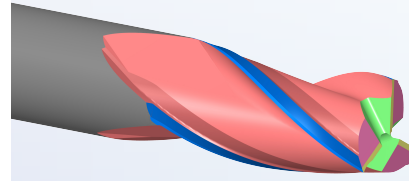
2-flute cylindrical endmill with center cut, 2 and 1-flute center cut

Steel milling, universal use

This course is the gateway to all endmill and formtool trainings. Each participant receives a complete and detailed basic training to fully enter the world of cylindrical endmill grinding.

-

GrindSmart®530XW, 630XS/XW



## ENDMILL Ø6 Z3

002

Carbide, Ø 6 x 57 mm

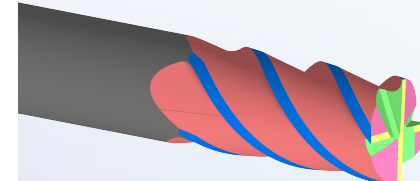
3-flute cylindrical endmill with center cut

Steel milling, universal use

This course is an extension of the "Cylindrical endmill" basic course. It enables you to deepen your knowledge of endmills. Emphasis is placed on the specific features of 3-flute endmills.

2-flute cylindrical endmill

GrindSmart®530XW, 630XS/XW



## ENDMILL Ø6 Z4

003

Carbide, Ø 6 x 57 mm

4-flute cylindrical endmill with center cut

Milling hardened steels

This course is an extension of the "Cylindrical endmill" basic course. It enables you to deepen your knowledge of endmills. Emphasis is placed on the specific features of 4-flute endmills.

2-flute cylindrical endmill

GrindSmart®530XW, 630XS/XW

Specifications

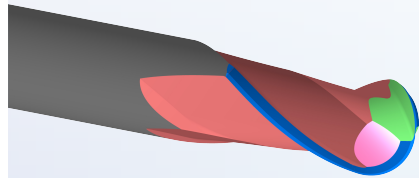
Tool type

Application

Description

Prerequisites

Machines



## BALLNOSE Z2

004

Carbide, Ø 6 - R3 x 57 mm

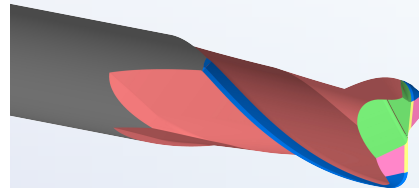
2-flute ballnose endmill with center cut

Milling steel molds

This course marks the beginning of the second level of the "Endmill" program. It emphasizes the importance of the details involved in grinding a 2-flute ballnose.

2-flute cylindrical endmill

GrindSmart®530XW, 630XS/XW



## CORNER RADIUS

005

Carbide, Ø 6  
R1 - R0.5 - R0.25 x 57 mm

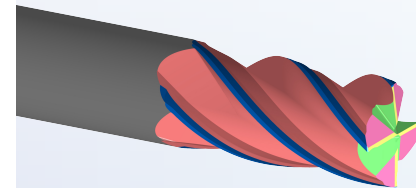
2-flute corner radius endmill with center cut

High-performance milling, steel molds

This course is the continuation of the second level of the "endmill" course. It focuses on three specific geometries related to corner radius, offering cutting-edge expertise in this field.

2-flute cylindrical endmill

GrindSmart®530XW, 630XS/XW



## ENDMILL UI

006

Carbide, Ø 10 x 72 mm

4-flute cylindrical endmill with center cut; uneven helix and divisions.

High-performance milling

This course focuses on the asymmetrical geometries essential for this type of endmill. Particular and specific modes are taught in detail.

2-flute cylindrical endmill

GrindSmart®530XW, 630XS/XW



660XW

## LEAN GRINDING

007

Carbide, Ø 3 x Ø 6 x 100 mm,  
3° taper

3-flute cylindrical endmill with blank preparation and center cut.

CAD CAM milling

This training is essential for the specific programming of 660XW machines. It focuses on blank preparation and use of the Zp axis. If you want to master the programming of this machine, this course is the ideal entry point.

2-flute cylindrical endmill

GrindSmart®660XW

Specifications

Tool type

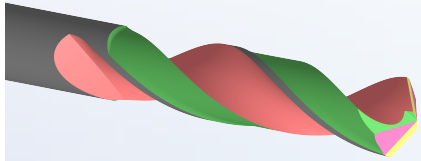
Application

Description

Prerequisites

Machines





## DRILL Ø6 Z2

020

Carbide, Ø 6 x 57 mm

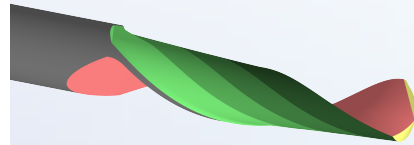
2-flute cylindrical drill type N

Steel drilling, universal use

This course is the gateway to all drill and step drill training. Each participant benefits from an exhaustive and detailed basic training course, enabling them to fully immerse themselves in the world of cylindrical drill grinding.

-

GrindSmart®530XW, 630XS/XW



## DRILL Ø6 Z1

021

Carbide, Ø 6 x 57 mm

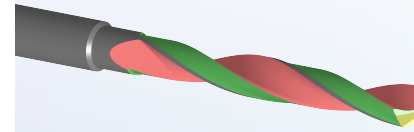
1-flute cylindrical drill

Light metal and brass drilling

This short course shows how to program and grind this special single-flute drill.

-

GrindSmart®530XW, 630XS/XW



DENTAL

## DRILL Z2

022

Medical stainless steel,  
Ø 2 x Ø 2.35 x 35 mm

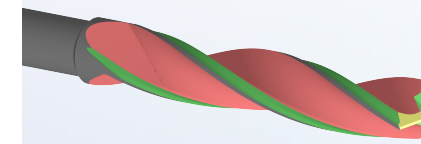
2-flute dental drill

Dental

This course is the gateway to all dental tool training. Each participant receives comprehensive basic training to discover the world of dental drill grinding. All specific options and accessories for grinding this type of tool are described at the start of the course.

-

GrindSmart®530XW, 630XS/XW



DENTAL

## DRILL Z3

023

Medical stainless steel, Ø 2 x Ø  
2.35 x 35 mm

3-flute dental drill

Dental

This complementary training course for the two-flute dental drill highlights the special features of this tool. It is also useful for anyone wishing to learn how to program a 3-flute drill.

2-flute drill or 2-flute dental drill

GrindSmart®530XW, 630XS/XW

Specifications

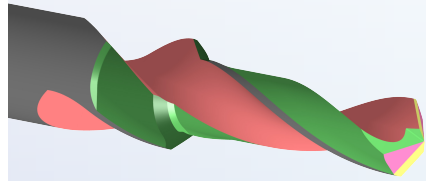
Tool type

Application

Description

Prerequisites

Machines



## STEPDRILL 90°

40A

Carbide, Ø 4.2 x Ø 6 x 57 mm

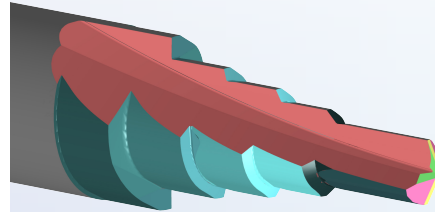
2-flute step drill

Drilling for M5 threaded holes

This course is the ideal introduction to all step drill training. Each participant benefits from a comprehensive training program, enabling them to fully immerse themselves in this world.

Ø6 2-flute cylindrical drill

GrindSmart®530XW, 630XS/XW



## STEPDRILL MULTI

041

Ø 4; Ø 5; Ø 6; Ø 8 x 63 mm

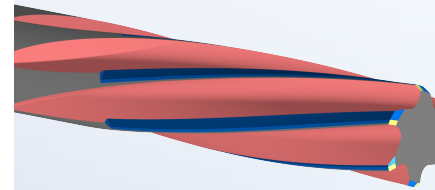
Step drill with 4 steps, software training only

Drilling for stepped holes

This training is a theoretical overview of several special cases, including straight fluting.

Step drill Ø4.2xØ6

GrindSmart®530XW, 630XS/XW



## REAMER Ø6 Z6

60A

Carbide, Ø 6 x 57 mm

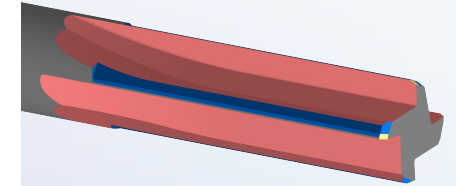
6-flute cylindrical reamers

Universal reaming

This course explains how to create a reamer using an endmill program. The optional use of the tailstock is also studied on computer.

2-flute cylindrical endmill

GrindSmart®530XW, 630XS/XW



## REAMER Ø6 Z4

60B

Carbide, Ø 6 x 57 mm

4-flute cylindrical reamers

Universal reaming

This course shows how to create a reamer using an endmill program. The optional use of the tailstock is also studied on computer.

2-flute cylindrical endmill

GrindSmart®530XW, 630XS/XW

Specifications

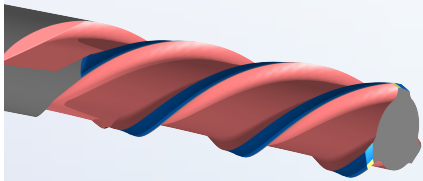
Tool type

Application

Description

Prerequisites

Machines



## REAMER Ø6 Z3

60C

Carbide, Ø 6 x 57 mm

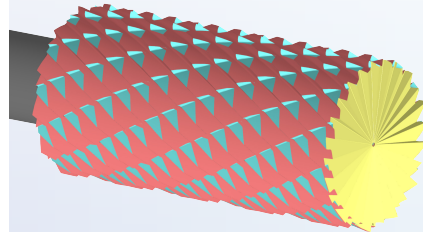
3-flute cylindrical reamers

Universal reaming

This course shows how to create a reamer using an endmill program. The optional use of the tailstock is also studied on computer.

2-flute cylindrical endmill

GrindSmart®530XW, 630XS/XW



## BURS BSA

80A

Carbide head brazed on steel blank, Ø 12, shank Ø 6 mm

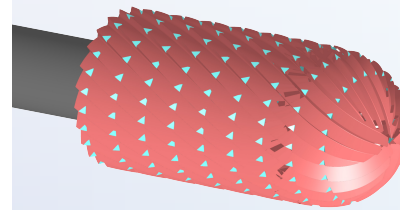
Standard rotary burs

Deburring

This course explains how to make a standard rotary bur. The four basic operations are implemented to achieve this result.

-

GrindSmart®530XW, 630XS/XW



## BURS BSC

80B

Carbide head brazed on steel blank, Ø 12, shank Ø 6 mm

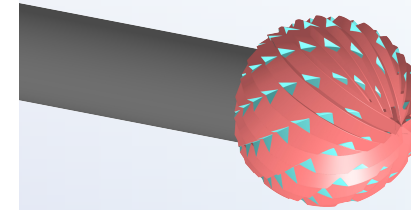
Standard rotary burs

Deburring

This course explains how to use a standard rotary bur. The four basic operations are covered.

-

GrindSmart®530XW, 630XS/XW



## BURS BSD

80C

Carbide head brazed on steel blank, Ø 12, shank Ø 6 mm

Standard rotary burs

Deburring

This course explains how to make a standard rotary bur. The four basic operations are covered.

-

GrindSmart®530XW, 630XS/XW

Specifications

Tool type

Application

Description

Prerequisites

Machines

Specifications

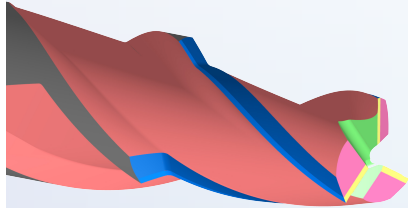
Tool type

Application

Description

Prerequisites

Machines



## STEP ENDMILL

100A+B

Carbide,  $\varnothing 6 \times \varnothing 8 \times 63$  mm

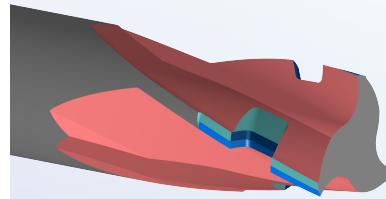
Step endmill 3 flute

Stepped profile milling

This training course is the first step into the vast world of form tools. The essential steps are covered progressively, one after the other, so that you become fully familiar with this type of tool.

2-flute cylindrical endmill

GrindSmart®630XW



## GROOVE ENDMILL

101

Carbide,  $\varnothing 8 \times 63$  mm

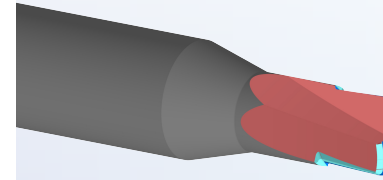
3-flute slot endmill

Internal groove profile milling

This course is the second step in deepening your understanding of form tools. Complex geometry requires functions to define reliefs angles and move the rotary axis.

Form tool #1

GrindSmart®630XW



## BULLNOSE

102

Carbide,  $\varnothing 4 \times \varnothing 6 \times 57$  mm

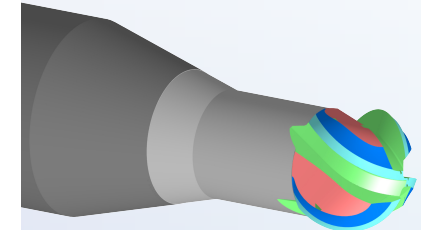
"Bullnose" multi-radius endmill

Ultra-high-speed milling (UTGV)

This course is the third step in expanding the world of form tools. The particular shape requires functions dedicated to this type of tool.

Form tool #1 or #2

GrindSmart®630XW



## BACKBALL

103

Carbide,  $\varnothing 4 \times \varnothing 6 \times 57$  mm

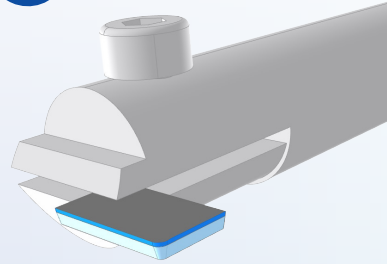
240° Backball endmill

Form milling

This training course marks a new stage in the extensive mastery of form tools. Special shapes require operations that have not been covered in the first three types of form tools.

Form tool #1 or #2

GrindSmart®630XW



## LASER 1A

1A

Polycrystalline diamond (PCD)

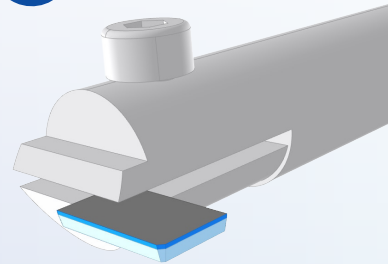
1-flute endmill corner radius  
Ø 24 mm

Educational tool

This teaching tool is designed to facilitate training and learning in the specific field of laser machining.

-

LaserSmart 510, 510-F, 810XL



## LASER 2A

2A

Polycrystalline diamond (PCD)

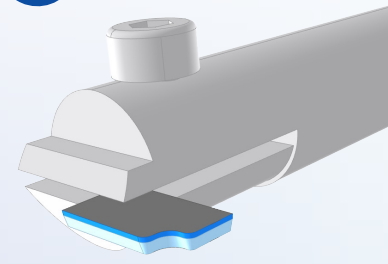
1-flute endmill square&chamfer  
Ø 22 mm

Educational tool

This teaching tool is designed to facilitate training and apprenticeship in the specific field of laser machining, with a step-by-step breakdown as participants discover the different ways of designing and programming tools.

Laser 1A

LaserSmart 510, 510-F, 810XL



## LASER 3A

3A

Polycrystalline diamond (PCD)

1-flute form tool Ø 22 mm

Educational tool

This teaching tool is designed to facilitate training and apprenticeship in the specific field of laser machining, with a step-by-step breakdown as participants discover the different ways of designing and programming tools.

Laser 2A

LaserSmart 510, 510-F, 810XL

Specifications

Tool type

Application

Description

Prerequisites

Machines

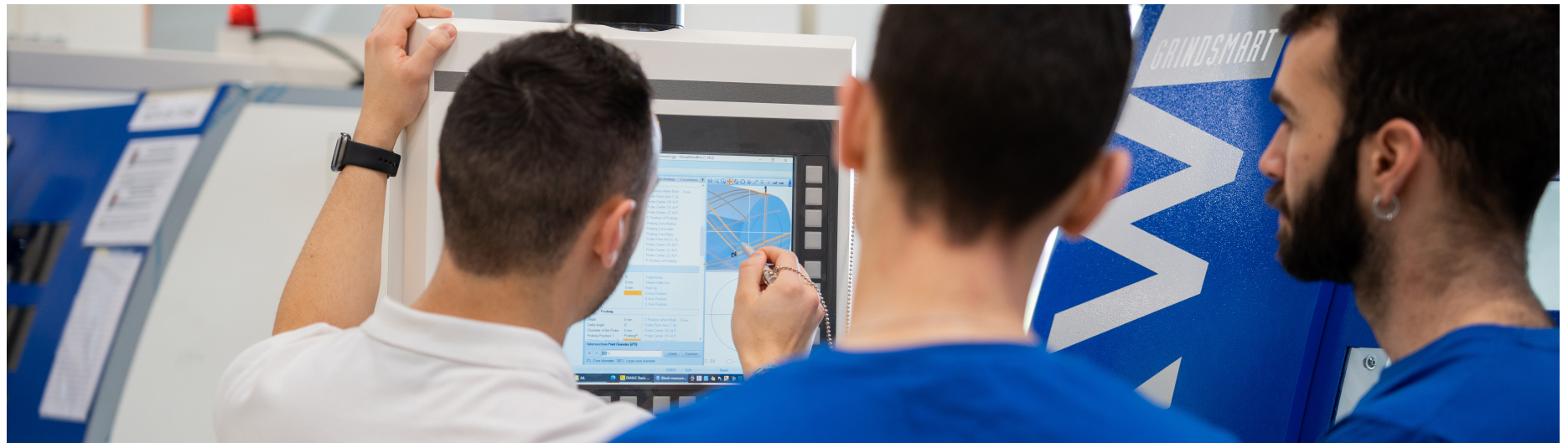
# OUR TRAINING COURSES

Rollomatic Learning Center aims to take you to the next level of knowledge. On request, we can also offer you a program of several training courses tailored to your needs. This will enable you to plan the development of your staff in an optimal, practical and logical way.

Our expertise enables us to suggest programs in line with your activities; however, you can build your own training program as you wish. Guaranteed performance gains: Rollomatic training courses represent real added value.



LEARN MORE

























# BEGINNER

BEGINNER  


ADVANCED  


	CYLINDRICAL ENDMILL	 5 DAYS	 3 DAYS
	660XW TOOL	 3 DAYS	 2 DAYS
	DRILL	 3 DAYS	 2 DAYS
	DENTAL TOOLS	 3 DAYS	 2 DAYS
	REAMERS	 3 DAYS	 2 DAYS
	BURS	 3 DAYS	 2 DAYS
	PCD ENDMILL	 5 DAYS	 4 DAYS

# ADVANCED

	RADIUS ENDMILL	 3 DAYS	 3 DAYS
	UI	 1 DAYS	 1 DAYS
	DRILL	 3 DAYS	 3 DAYS
	FORM TOOLS	 4 DAYS	 4 DAYS

[learningcenter.rollomatic.ch](http://learningcenter.rollomatic.ch)