

## “The best value in wheel adapters you’ll find”

**O**ur high precision German wheel adapters from GDS meet or exceed all OEM specs. And because our markup is small, you get a great deal! Check out these examples:

**Maximize spindle life...  
and tool quality**

Our grinding wheel adapters offer you:

- Peerless taper accuracy by using constantly controlled and calibrated measuring equipment. HSK mating surfaces machined to within 10 microns
- Absolute accuracy of fit and optimum radial and axial run-out. HSK adapters balanced to G1.6 @ 10,000 RPM
- Extreme load-bearing capacity, thanks to our use of tempered material and the best heat treating processes (vacuum hardened to 54 Rc)
- Optimum surface quality and long-term dimensional stability and precision, as well as spindle protection, thanks to our finishing processes

We offer adapters for all major brands, to include adapters for dressing, presetting, and balancing. And we maintain a large stock!

ANCA wheel adapters with full ring sets			
Description	Application	Nose Length	Price
HSK 40F	FX5/7	55 mm	\$393
		72 mm	\$428
		85 mm	\$428
		95 mm	\$428
HSK 50F	MX5/7	55 mm	\$393
		72 mm	\$428
		85 mm	\$468
		95 mm	\$528
Big Plus	TX7	95 mm	\$879
Rollomatic wheel adapters with full ring sets			
Perfect Arbor	529XS etc	85 mm straight	\$636
	NP5 etc	11 mm	\$474

**Call:** +1 (540) 940-5977  
**Email:** [info@toolroom.solutions](mailto:info@toolroom.solutions)  
**Web:** [www.toolroom.solutions](http://www.toolroom.solutions)

**Order now!**



# Grinding wheel adapters

and  
Accessories



good better BLUE

20 YEARS  
since 1998 GDS



## Grinding wheel adapter and accessories

Precision grinding requires an optimal spindle and a flawless grinding wheel, both of which depend on a perfect grinding wheel adapter.

# “Our quality for your success”

We adapt to your requirements and guarantee our quality.

**GDS - the precision makers**



Our grinding wheel adapters are characterised by the following:



Maximum taper accuracy by using constantly controlled and calibrated measuring equipment.



Absolute accuracy of fit and optimum radial and axial run-out.



Extreme load-bearing capacity due to the use of tempered material and the best heat treating processes.



Optimum surface quality and associated long-term dimensional stability and precision, as well as spindle protection as a result of finished surfaces.

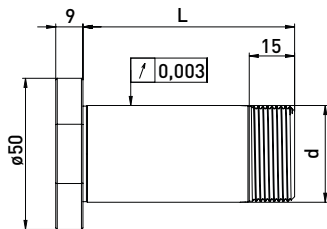
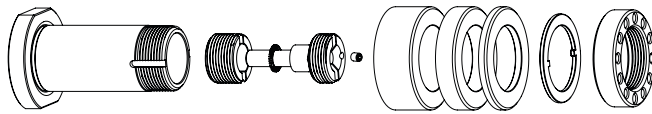


Balanced models for improved grinding results and spindle life.

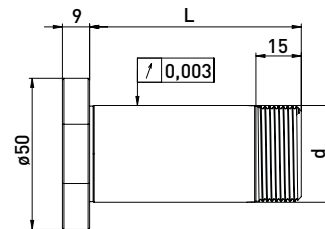
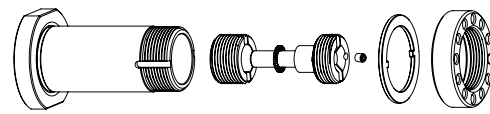
# ANCA Internal taper 30 // Shaft $\varnothing 32$ mm // RS $\varnothing 50$ mm

For ANCA tool grinding machines with ring set  $\varnothing 50$  mm  
with integrated clamping and press-off system (M8 bolt)

## GWA Internal taper 30 // $\varnothing 32$ mm // RS $\varnothing 50$ mm



## GWA Internal taper 30 // $\varnothing 32$ mm // without RS



### Ring set $\varnothing 50$ mm

Order No.	Internal taper	d	L	B20	B10	B4
300020612	30	32	53	1	1	2
300020622	30	32	70	1	2	4
300020632	30	32	85	2	2	3
300020642	30	32	100	2	3	4

Order No.	Internal taper	d	L
300020611	30	32	53
300020621	30	32	70
300020631	30	32	85
300020641	30	32	100

## ANCA grinding wheel adapter Internal taper 30 // Shaft $\varnothing 32$ mm // Ring set $\varnothing 50$ mm

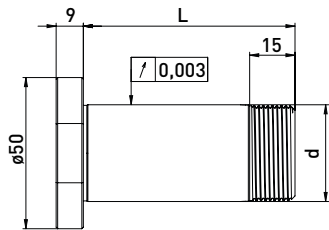
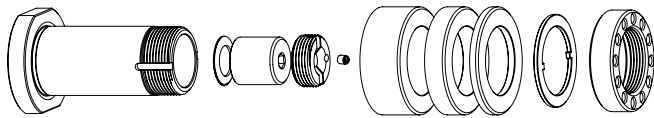
Order No.	Name	
350050010	Universal assembly device $\varnothing 50$	
350040030	for ANCA nut	
350020102	ANCA installation system with M8 screw	
350060011	Assembly wrench set installation system ANCA (SW 6 + SW 2)	
750000001	Clamping wrench SW 6,0 x 150	
350020027	*Balancing weight pair for clamping nut $\varnothing 47$ // 70gmm	

Order No.	Name	
350011220	Spacer ring $\varnothing 50$ x $\varnothing 32$ x 20	
350011210	Spacer ring $\varnothing 50$ x $\varnothing 32$ x 10	
350011204	Spacer ring $\varnothing 50$ x $\varnothing 32$ x 4	
350030040	Lock washer $\varnothing 43$ x $\varnothing 32$ x 2	
350020050	Clamping nut ANCA balancing hole M31,5 x 1,5 $\varnothing 47$ x 12	
350020026	*Clamping nut with balancing option M31,5 x 1,5 $\varnothing 47$ x 12	

# ANCA Internal taper 30 // Shaft $\varnothing 32$ mm // RS $\varnothing 50$ mm

For ANCA tool grinding machines with ring set  $\varnothing 50$  mm  
with integrated clamping and press-off system (M14 x 1.5 nut)

## GWA Internal taper 30 // $\varnothing 32$ mm // RS $\varnothing 50$ mm

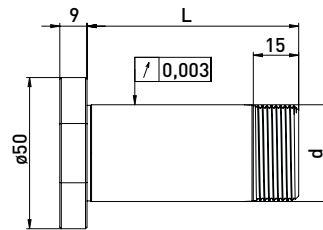
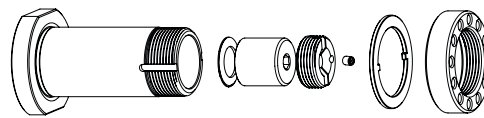


Delivered equipped:  
Installation system, ring set  $\varnothing 50$  mm, lock washer and clamping nut ANCA with balancing hole

Ring set  $\varnothing 50$  mm

Order No.	Internal taper	d	L	B20	B10	B4
300020212	30	32	53	1	1	4
300020222	30	32	70	1	2	4
300020232	30	32	85	2	2	3
300020242	30	32	100	2	3	4

## GWA Internal taper 30 // $\varnothing 32$ mm // without RS



Delivered equipped:  
Installation system, lock washer and clamping nut ANCA with balancing hole

Order No.	Internal taper	d	L
300020211	30	32	53
300020221	30	32	70
300020231	30	32	85
300020241	30	32	100

## Accessories ANCA grinding wheel adapter Internal taper 30 // Shaft $\varnothing 32$ mm // Ring set $\varnothing 50$ mm

Order No.	Name	
350050010	Universal assembly device $\varnothing 50$	
350040030	Clamping nut wrench PC39 for ANCA nut	
350020101	Installation system with M14 x 1.5 nut	
350060011	Assembly wrench set installation system ANCA [SW 6 + SW 2]	
750000001	Clamping wrench SW 6,0 x 150	
350020027	*Balancing weight pair for clamping nut $\varnothing 47$ // 70gmm	

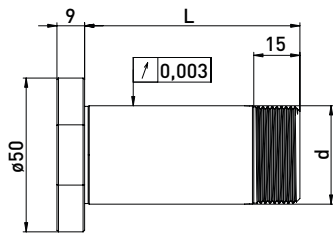
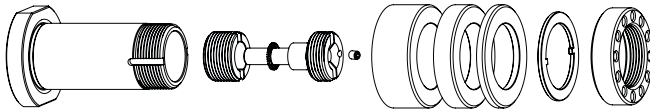
Order No.	Name	
350011220	Spacer ring $\varnothing 50$ x $\varnothing 32$ x 20	
350011210	Spacer ring $\varnothing 50$ x $\varnothing 32$ x 10	
350011204	Spacer ring $\varnothing 50$ x $\varnothing 32$ x 4	
350030040	Lock washer $\varnothing 43$ x $\varnothing 32$ x 2	
350020050	Clamping nut ANCA balancing hole M31,5 x 1,5 $\varnothing 47$ x 12	
350020026	*Clamping nut with balancing option M31,5 x 1,5 $\varnothing 47$ x 12	

\*related items

# ANCA Internal taper 30 // Shaft $\varnothing 31,75$ mm (1¼) // RS $\varnothing 50$ mm

For ANCA tool grinding machines with ring set  $\varnothing 50$  mm  
with integrated clamping and press-off system (M8 bolt)

## GWA Internal taper 30 // $\varnothing 31,75$ mm (1¼) // RS $\varnothing 50$ mm

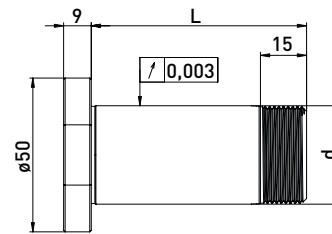
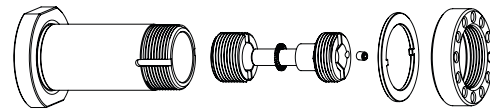


Delivered equipped:  
Installation system, ring set  $\varnothing 50$  mm, lock washer and clamping nut ANCA balancing hole

Ring set  $\varnothing 50$  mm

Order No.	Internal taper	d	L	B20	B10	B4
300020512	30	31,75	53	1	1	2
300020522	30	31,75	70	1	2	4
300020532	30	31,75	85	2	2	3
300020542	30	31,75	100	2	3	4

## GWA Internal taper 30 // $\varnothing 31,75$ mm // without RS



Delivered equipped:  
Installation system, lock washer and clamping nut ANCA balancing hole

Order No.	Internal taper	d	L
300020511	30	31,75	53
300020521	30	31,75	70
300020531	30	31,75	85
300020541	30	31,75	100

## Accessories ANCA grinding wheel adapter Internal taper 30 // Shaft $\varnothing 31,75$ mm (1¼) // Ring set $\varnothing 50$ mm

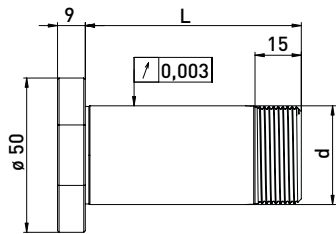
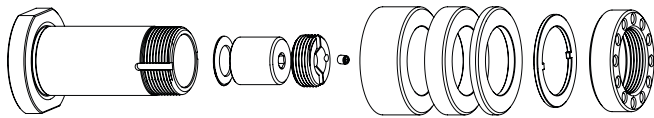
Order No.	Name	
350050010	Universal assembly device $\varnothing 50$	
350040030	Clamping nut wrench PC39 for ANCA nut	
350020102	ANCA installation system with M8 screw	
350060011	Assembly wrench set installation system ANCA (SW 6 + SW 2)	
750000001	Clamping wrench SW 6,0 x 150	
350020027	*Balancing weight pair for clamping nut $\varnothing 47$ // 70gmm	

Order No.	Name	
350011120	Spacer ring $\varnothing 50$ x $\varnothing 31,75$ x 20	
350011110	Spacer ring $\varnothing 50$ x $\varnothing 31,75$ x 10	
350011104	Spacer ring $\varnothing 50$ x $\varnothing 31,75$ x 4	
350030040	Lock washer $\varnothing 43$ x $\varnothing 32$ x 2	
350020050	Clamping nut ANCA balancing hole M31,5 x 1,5 $\varnothing 47$ x 12	
350020026	*Clamping nut with balancing option M31,5 x 1,5 $\varnothing 47$ x 12	

# ANCA Internal taper 30 // Shaft $\varnothing 31,75$ mm (1¼) // RS $\varnothing 50$ mm

For ANCA tool grinding machines with ring set  $\varnothing 50$  mm  
with integrated clamping and press-off system (M14 x 1.5 nut)

## GWA Internal taper 30 // $\varnothing 31,75$ mm (1¼) // RS $\varnothing 50$ mm

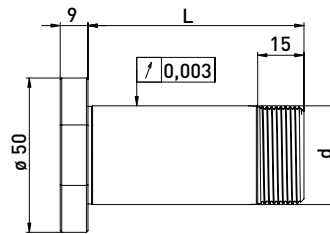
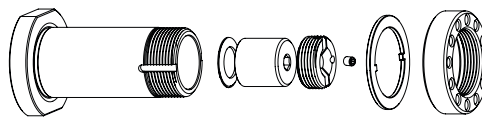


Delivered equipped:  
Installation system, ring set  $\varnothing 50$  mm, lock washer and clamping nut ANCA balancing hole

### Ring set $\varnothing 50$ mm

Order No.	Internal taper	d	L	B 20	B 10	B 4
300020112	30	31,75	53	1	1	2
300020122	30	31,75	70	1	2	4
300020132	30	31,75	85	2	2	3
300020142	30	31,75	100	2	3	4

## GWA Internal taper 30 // $\varnothing 31,75$ mm // without RS



Delivered equipped:  
Installation system, lock washer and clamping nut ANCA balancing hole

Order No.	Internal taper	d	L
300020111	30	31,75	53
300020121	30	31,75	70
300020131	30	31,75	85
300020141	30	31,75	100

## Accessories ANCA grinding wheel adapter Internal taper 30 // Shaft $\varnothing 31,75$ mm (1¼) // Ring set $\varnothing 50$ mm

Order No.	Name	
350050010	Universal assembly device $\varnothing 50$	
350040030	Clamping nut wrench PC39 for ANCA nut	
350020101	Installation system with M14 x 1.5 nut	
350060011	Assembly wrench set installation system ANCA (SW 6 + SW 2)	
750000001	Clamping wrench SW 6,0 x 150	
350020027	*Balancing weight pair for clamping nut $\varnothing 47$ // 70gmm	

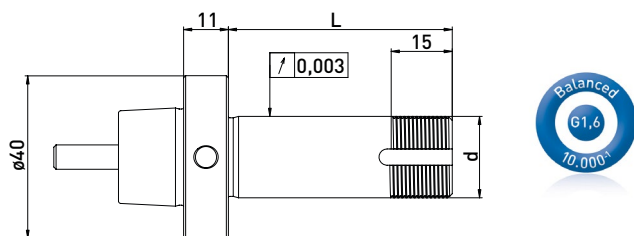
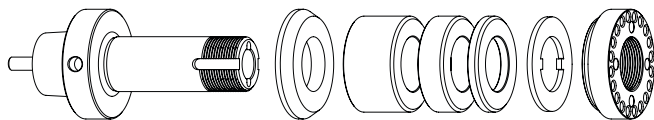
Order No.	Name	
350011120	Spacer ring $\varnothing 50$ x $\varnothing 31,75$ x 20	
350011110	Spacer ring $\varnothing 50$ x $\varnothing 31,75$ x 10	
350011104	Spacer ring $\varnothing 50$ x $\varnothing 31,75$ x 4	
350030040	Lock washer $\varnothing 43$ x $\varnothing 32$ x 2	
350020050	Clamping nut ANCA balancing hole M31,5 x 1,5 $\varnothing 47$ x 12	
350020026	*Clamping nut with balancing option M31,5 x 1,5 $\varnothing 47$ x 12	

\*related items

# ANCA HSK-F40 // Shaft $\varnothing 20$ mm // RS $\varnothing 35$ mm

For ANCA tool grinding machines with ring set  $\varnothing 35$  mm

## GWA HSK-F40 // $\varnothing 20$ mm // RS $\varnothing 35$ mm



Delivered equipped:

Installation system, reducing washer, ring set  $\varnothing 35$  mm, lock washer and clamping nut

Order No.	HSK	d	L	Ring set $\varnothing 35$ mm		
				B 20	B 10	B 4
300022012	HSK-F40	20	55	1	1	2
300022022	HSK-F40	20	72	1	2	3
300022032	HSK-F40	20	85	2	2	2
300022042	HSK-F40	20	95	2	3	2

## Accessories ANCA grinding wheel adapter HSK-F40 // Shaft $\varnothing 20$ mm // Ring set $\varnothing 35$ mm

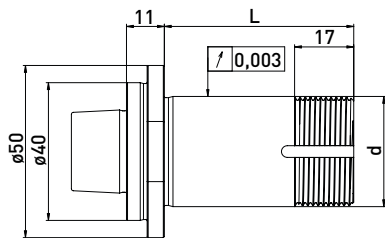
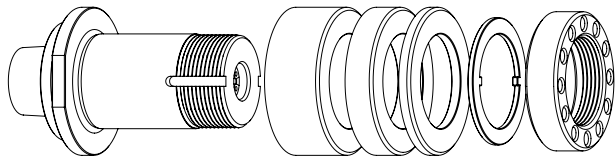
Order No.	Name	
350050050	Assembly device HSK40 $\varnothing 40$	
350040010	Clamping nut wrench PC27 for $\varnothing 20$	
350040011	Clamping nut wrench PC27 for $\varnothing 20$	

Order No.	Name	
350012020	Spacer ring $\varnothing 35 \times \varnothing 20 \times 20$	
350012010	Spacer ring $\varnothing 35 \times \varnothing 20 \times 10$	
350012004	Spacer ring $\varnothing 35 \times \varnothing 20 \times 4$	
350015006	Reducing washer $\varnothing 40 \times \varnothing 35 \times \varnothing 20 \times 6$	
350030050	Lock washer $\varnothing 50 \times \varnothing 20 \times 2$	
350020030	Clamping nut $\varnothing 35 \times 6$ M20 x 1 PC27	
350020070	Clamping nut $\varnothing 35 \times \varnothing 40 \times 12$ M20 x 1 with balancing bores M4	



For ANCA tool grinding machines with ring set  $\varnothing 50$  mm  
with integrated clamping and press-off system M6 clamping screw

## GWA manual HSK-F40 // $\varnothing 31,75$ mm (1¼) // RS $\varnothing 50$ mm

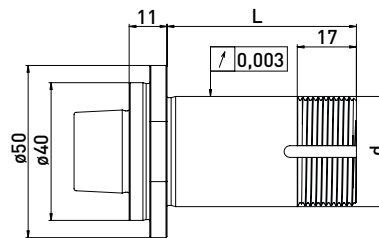
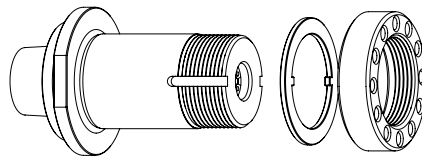


Delivered equipped:  
Installation system, ring set  $\varnothing 50$  mm, lock washer and clamping nut ANCA balancing hole

### Ring set $\varnothing 50$ mm

Order No.	HSK	d	L	B 20	B 10	B 4
300023112	HSK-F40	31,75	55	1	1	3
300023122	HSK-F40	31,75	72	2	1	2
300023132	HSK-F40	31,75	85	2	2	3
300023142	HSK-F40	31,75	95	3	1	3

## GWA manual HSK-F40 // $\varnothing 31,75$ mm // without RS



Delivered equipped:  
Installation system, lock washer and clamping nut ANCA balancing hole

## Accessories ANCA grinding wheel adapter manual HSK-F40 // Shaft $\varnothing 31,75$ mm (1¼) // Ring set $\varnothing 50$ mm

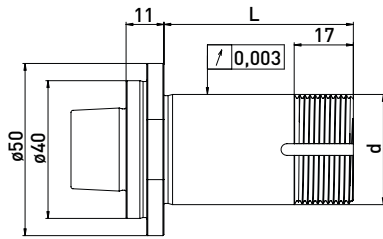
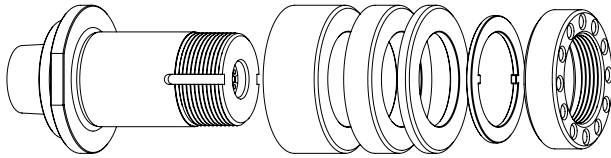
Order No.	Name	
350050050	Assembly device HSK40 $\varnothing 40$	
350040030	Clamping nut wrench PC39 for ANCA nut	
350020027	*Balancing weight pair for clamping nut $\varnothing 47$ // 70gmm	

Order No.	Name	
350011120	Spacer ring $\varnothing 50$ x $\varnothing 31,75$ x 20	
350011110	Spacer ring $\varnothing 50$ x $\varnothing 31,75$ x 10	
350011104	Spacer ring $\varnothing 50$ x $\varnothing 31,75$ x 4	
350030040	Lock washer $\varnothing 43$ x $\varnothing 32$ x 2	
350020050	Clamping nut ANCA balancing hole M31,5 x 1,5 $\varnothing 47$ x 12	
350020026	*Clamping nut with balancing option M31,5 x 1,5 $\varnothing 47$ x 12	

# ANCA manual HSK-F40 // Shaft $\varnothing 32$ mm // RS $\varnothing 50$ mm

For ANCA tool grinding machines with ring set  $\varnothing 50$  mm  
with integrated clamping and press-off system M6 clamping screw

## GWA manual HSK-F40 // $\varnothing 32$ mm // RS $\varnothing 50$ mm

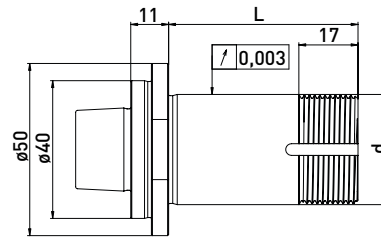
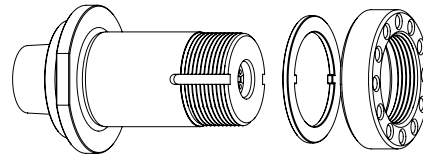


Delivered equipped:  
Installation system, ring set  $\varnothing 50$  mm, lock washer and clamping nut ANCA balancing hole

### Ring set $\varnothing 50$ mm

Order No.	HSK	d	L	B 20	B 10	B 4
300023212	HSK-F40	32	55	1	1	3
300023222	HSK-F40	32	72	2	1	2
300023232	HSK-F40	32	85	2	2	3
300023242	HSK-F40	32	95	3	1	3

## GWA manual HSK-F40 // $\varnothing 32$ mm // without RS



Delivered equipped:  
Installation system, lock washer and clamping nut ANCA balancing hole

Order No.	HSK	d	L
300023211	HSK-F40	32	55
300023221	HSK-F40	32	72
300023231	HSK-F40	32	85
300023241	HSK-F40	32	95

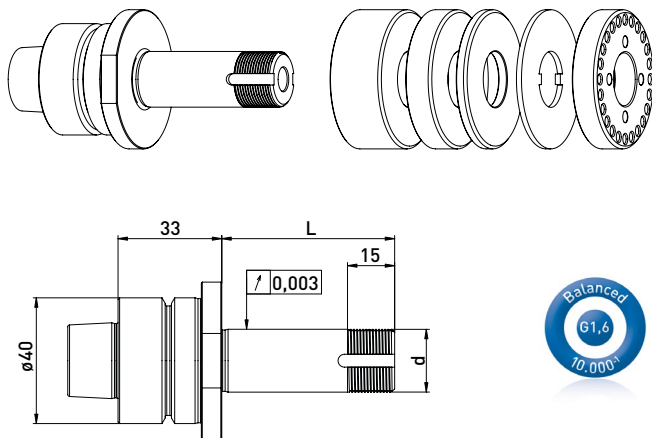
## Accessories ANCA grinding wheel adapter manual HSK-F40 // Shaft $\varnothing 20$ mm // Ring set $\varnothing 50$ mm

Order No.	Name	
350050050	Assembly device HSK40 $\varnothing 40$	
350040030	Clamping nut wrench PC39 for ANCA nut	
350020027	*Balancing weight pair for clamping nut $\varnothing 47$ // 70gmm	

Order No.	Name	
350011220	Spacer ring $\varnothing 50$ x $\varnothing 32$ x 20	
350011210	Spacer ring $\varnothing 50$ x $\varnothing 32$ x 10	
350011204	Spacer ring $\varnothing 50$ x $\varnothing 32$ x 4	
350030040	Lock washer $\varnothing 43$ x $\varnothing 32$ x 2	
350020050	Clamping nut ANCA balancing hole M31,5 x 1,5 $\varnothing 47$ x 12	
350020026	*Clamping nut with balancing option M31,5 x 1,5 $\varnothing 47$ x 12	

For ANCA tool grinding machines with ring set  $\varnothing 50$  mm

## GWA automatic HSK-F40 // $\varnothing 20$ mm // RS $\varnothing 50$ mm

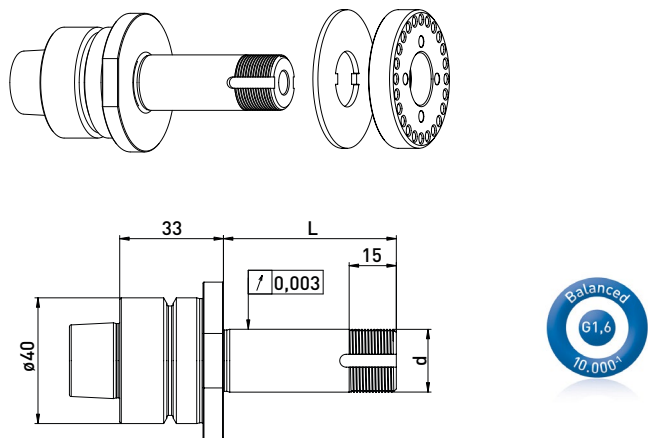


Delivered equipped:  
 Ring set  $\varnothing 50$  mm, lock washer and clamping nut ANCA with balancing hole

Ring set  $\varnothing 50$ mm

Order No.	HSK	d	L	Ring set $\varnothing 50$ mm		
				B 20	B 10	B 4
300025012	HSK-F40	20	55	1	1	3
300025022	HSK-F40	20	72	2	1	2
300025032	HSK-F40	20	85	2	2	3
300025042	HSK-F40	20	95	3	1	3

## GWA automatic HSK-F40 // $\varnothing 20$ mm // without RS



Delivered equipped:  
 Lock washer and clamping nut ANCA with balancing hole

Order No.	HSK	d	L
300025011	HSK-F40	20	55
300025021	HSK-F40	20	72
300025031	HSK-F40	20	85
300025041	HSK-F40	20	95

## Accessories ANCA grinding wheel adapter automatic HSK-F40 // Shaft $\varnothing 20$ mm // Ring set $\varnothing 50$ mm

Order No.	Name	
350050050	Assembly device HSK40 $\varnothing 40$	
350040010	Clamping nut wrench PC27 for $\varnothing 20$	
350040011	Clamping nut wrench PC27 for $\varnothing 20$	
350020021	*Balancing weight pair for clamping nut $\varnothing 50$ // 100gmm	

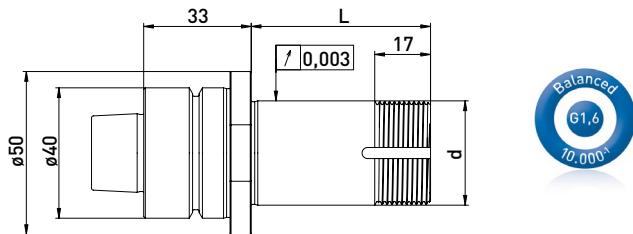
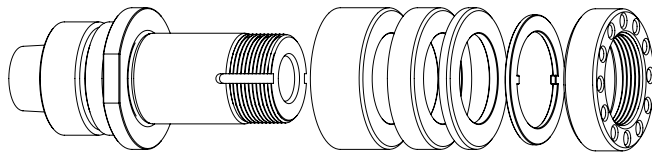
Order No.	Name	
350011020	Spacer ring $\varnothing 50$ x $\varnothing 20$ x 20	
350011010	Spacer ring $\varnothing 50$ x $\varnothing 20$ x 10	
350011004	Spacer ring $\varnothing 50$ x $\varnothing 20$ x 4	
350030010	Lock washer $\varnothing 50$ x $\varnothing 20$ x 2	
350020051	Clamping nut ANCA M20 x 1 $\varnothing 50$ x 9,5	
350020020	*Clamping nut with balancing option $\varnothing 50$ x 8,5 M20 x 1,0	

\*related items

# ANCA automatic HSK-F40 // Shaft $\varnothing 31,75$ mm (1¼) // RS $\varnothing 50$ mm

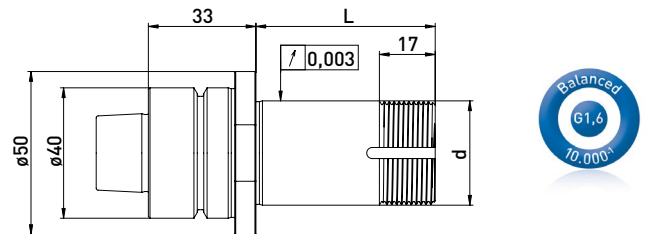
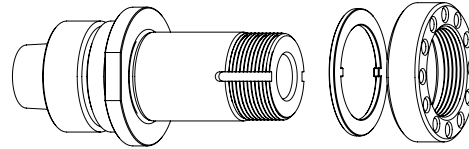
For ANCA tool grinding machines with ring set  $\varnothing 50$  mm

## GWA automatic HSK-F40 // $\varnothing 31,75$ mm (1¼) // RS $\varnothing 50$ mm



Delivered equipped:  
Ring set  $\varnothing 50$  mm, lock washer and clamping nut ANCA balancing hole

## GWA automatic HSK-F40 // $\varnothing 31,75$ mm // without RS



Delivered equipped:  
Lock washer and clamping nut ANCA balancing hole

### Ring set $\varnothing 50$ mm

Order No.	HSK	d	L	B 20	B 10	B 4
300025112	HSK-F40	31,75	55	1	1	3
300025122	HSK-F40	31,75	72	2	1	2
300025132	HSK-F40	31,75	85	2	2	3
300025142	HSK-F40	31,75	95	3	1	3

Order No.	HSK	d	L
300025111	HSK-F40	31,75	55
300025121	HSK-F40	31,75	72
300025131	HSK-F40	31,75	85
300025141	HSK-F40	31,75	95

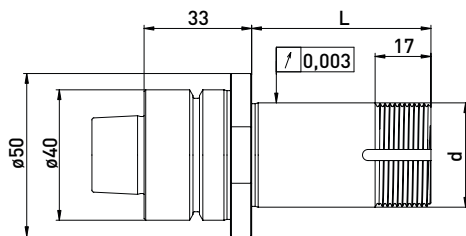
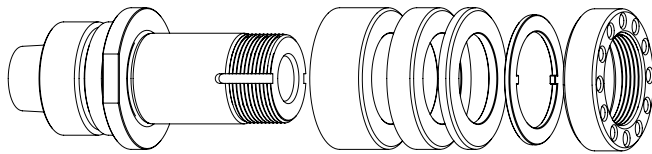
## Accessories ANCA grinding wheel adapter automatic HSK-F40 // Shaft $\varnothing 31,75$ mm (1¼) // Ring set $\varnothing 50$ mm

Order No.	Name	
350050010	Universal assembly device $\varnothing 50$	
350040030	Clamping nut wrench PC39 for ANCA nut	
350020027	*Balancing weight pair for clamping nut $\varnothing 47$ // 70gmm	

Order No.	Name	
350011120	Spacer ring $\varnothing 50 \times \varnothing 31,75 \times 20$	
350011110	Spacer ring $\varnothing 50 \times \varnothing 31,75 \times 10$	
350011104	Spacer ring $\varnothing 50 \times \varnothing 31,75 \times 4$	
350030040	Lock washer $\varnothing 43 \times \varnothing 32 \times 2$	
350020050	Clamping nut ANCA balancing hole M31,5 x 1,5 $\varnothing 47 \times 12$	
350020026	*Clamping nut with balancing option M31,5 x 1,5 $\varnothing 47 \times 12$	

For ANCA tool grinding machines with ring set  $\varnothing 50$  mm

## GWA automatic HSK-F40 // $\varnothing 32$ mm // RS $\varnothing 50$ mm



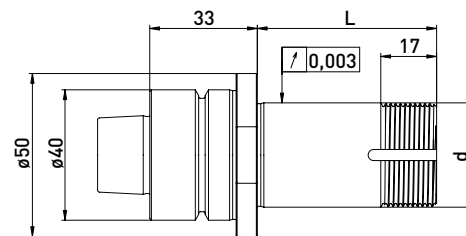
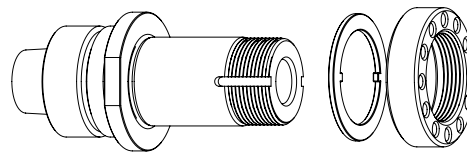
Delivered equipped:

Ring set  $\varnothing 50$  mm, lock washer and clamping nut ANCA balancing hole

Ring set  $\varnothing 50$ mm

Order No.	HSK	d	L	Ring set $\varnothing 50$ mm		
				B 20	B 10	B 4
300025212	HSK-F40	32	55	1	1	3
300025222	HSK-F40	32	72	2	1	2
300025232	HSK-F40	32	85	2	2	3
300025242	HSK-F40	32	95	3	1	3

## GWA automatic HSK-F40 // $\varnothing 32$ mm // without RS



Delivered equipped:

Lock washer and clamping nut ANCA balancing hole

Order No.	HSK	d	L
300025211	HSK-F40	32	55
300025221	HSK-F40	32	72
300025231	HSK-F40	32	85
300025241	HSK-F40	32	95

## Accessories ANCA grinding wheel adapter automatic HSK-F40 // Shaft $\varnothing 32$ mm // Ring set $\varnothing 50$ mm

Order No.	Name	
350050010	Universal assembly device $\varnothing 50$	
350040030	Clamping nut wrench PC39 for ANCA nut	
350020027	*Balancing weight pair for clamping nut $\varnothing 47$ // 70gmm	

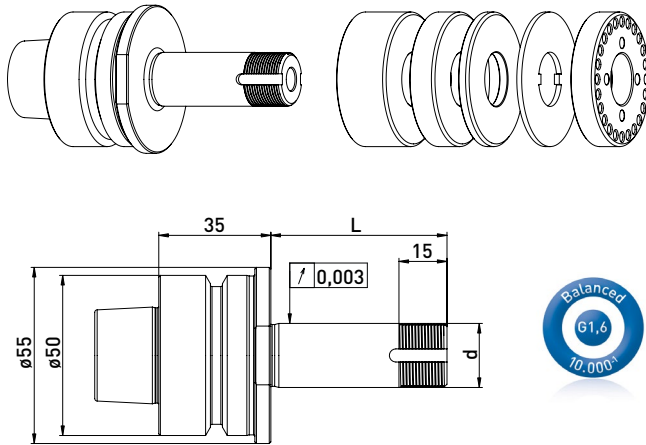
Order No.	Name	
350011220	Spacer ring $\varnothing 50$ x $\varnothing 32$ x 20	
350011210	Spacer ring $\varnothing 50$ x $\varnothing 32$ x 10	
350011204	Spacer ring $\varnothing 50$ x $\varnothing 32$ x 4	
350030040	Lock washer $\varnothing 43$ x $\varnothing 32$ x 2	
350020050	Clamping nut ANCA balancing hole M31,5 x 1,5 $\varnothing 47$ x 12	
350020026	*Clamping nut with balancing option M31,5 x 1,5 $\varnothing 47$ x 12	

\*related items

# ANCA automatic HSK-F50 // Shaft $\varnothing 20$ mm // RS $\varnothing 50$ mm

For ANCA tool grinding machines with ring set  $\varnothing 50$  mm

## GWA automatic HSK-F50 // $\varnothing 20$ mm // RS $\varnothing 50$ mm

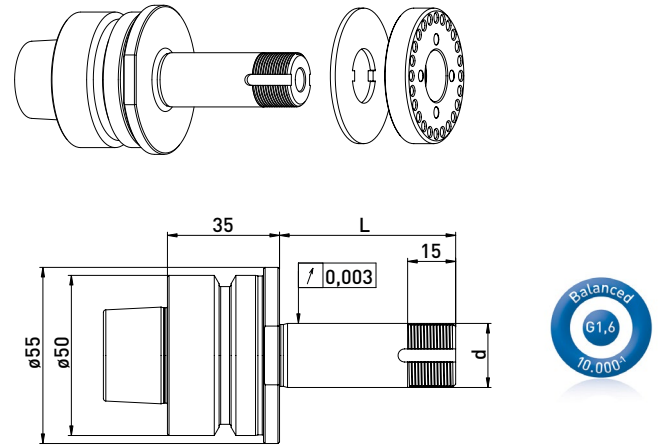


Delivered equipped:  
**Ring set  $\varnothing 50$  mm, lock washer and clamping nut ANCA balancing hole**

### Ring set $\varnothing 50$ mm

Order No.	HSK	d	L	B 20	B 10	B 4
300024012	HSK-F50	20	55	1	1	3
300024022	HSK-F50	20	72	2	1	2
300024032	HSK-F50	20	85	2	2	3
300024042	HSK-F50	20	95	3	1	3

## GWA automatic HSK-F50 // $\varnothing 20$ mm // without RS



Delivered equipped:  
**Lock washer and clamping nut ANCA balancing hole**

Order No.	HSK	d	L
300024011	HSK-F50	20	55
300024021	HSK-F50	20	72
300024031	HSK-F50	20	85
300024041	HSK-F50	20	95

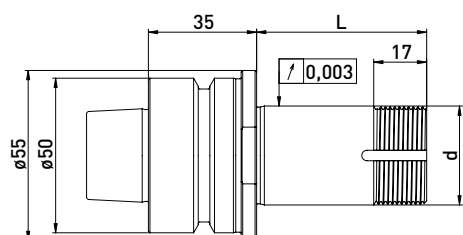
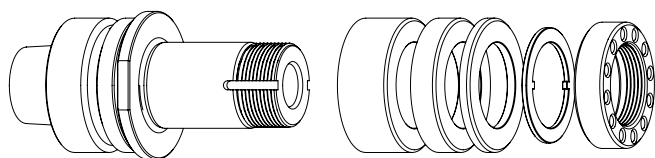
## Accessories ANCA grinding wheel adapter automatic HSK-F50 // Shaft $\varnothing 20$ mm // Ring set $\varnothing 50$ mm

Order No.	Name	
350050010	Universal assembly device $\varnothing 50$	
350040010	Clamping nut wrench PC27 for $\varnothing 20$	
350040011	Clamping nut wrench PC27 for $\varnothing 20$	
350020021	*Balancing weight pair for clamping nut $\varnothing 50$ // 100gmm	

Order No.	Name	
350011020	Spacer ring $\varnothing 50 \times \varnothing 20 \times 20$	
350011010	Spacer ring $\varnothing 50 \times \varnothing 20 \times 10$	
350011004	Spacer ring $\varnothing 50 \times \varnothing 20 \times 4$	
350030010	lock washer $\varnothing 50 \times \varnothing 20 \times 2$	
350020051	Clamping nut ANCA M20 x 1 $\varnothing 50 \times 9,5$	
350020020	*Clamping nut with balancing option $\varnothing 50 \times 8,5$ M20 x 1,0 PC27	

For ANCA tool grinding machines with ring set  $\varnothing 50$  mm

## GWA automatic HSK-F50 // $\varnothing 31,75$ mm (1¼) // RS $\varnothing 50$ mm



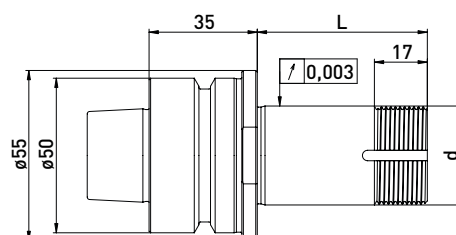
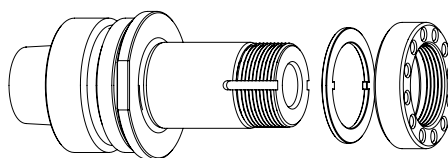
Delivered equipped:

Ring set  $\varnothing 50$  mm, lock washer and clamping nut ANCA balancing hole

Ring set  $\varnothing 50$ mm

Order No.	HSK	d	L	Ring set $\varnothing 50$ mm		
				B 20	B 10	B 4
300024112	HSK-F50	31,75	55	1	1	3
300024122	HSK-F50	31,75	72	2	1	2
300024132	HSK-F50	31,75	85	2	2	3
300024142	HSK-F50	31,75	95	3	1	3

## GWA automatic HSK-F50 // $\varnothing 31,75$ mm // without RS



Delivered equipped:

Lock washer and clamping nut ANCA balancing hole

Order No.	HSK	d	L
300024111	HSK-F50	31,75	55
300024121	HSK-F50	31,75	72
300024131	HSK-F50	31,75	85
300024141	HSK-F50	31,75	95

## Accessories ANCA grinding wheel adapter automatic HSK-F50 // Shaft $\varnothing 31,75$ mm (1¼) // Ring set $\varnothing 50$ mm

Order No.	Name	
350050010	Universal assembly device $\varnothing 50$	
350040030	Clamping nut wrench PC39 for ANCA nut	
350020027	*Balancing weight pair for clamping nut $\varnothing 47$ // 70gmm	

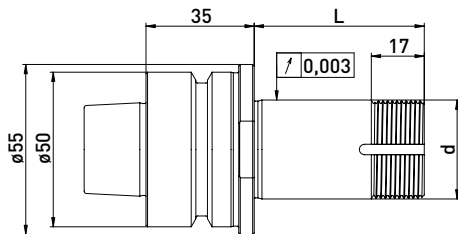
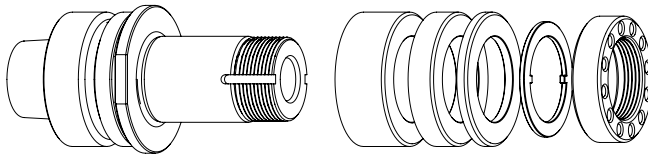
Order No.	Name	
350011120	Spacer ring $\varnothing 50 \times \varnothing 31,75 \times 20$	
350011110	Spacer ring $\varnothing 50 \times \varnothing 31,75 \times 10$	
350011104	Spacer ring $\varnothing 50 \times \varnothing 31,75 \times 4$	
350030040	Lock washer $\varnothing 43 \times \varnothing 32 \times 2$	
350020050	Clamping nut ANCA M31,5x1,5 $\varnothing 47 \times 12$	
350020026	*Clamping nut with balancing option M31,5 x 1,5 $\varnothing 47 \times 12$	

\*related items

# ANCA automatic HSK-F50 // Shaft $\varnothing 32$ mm // RS $\varnothing 50$ mm

For ANCA tool grinding machines with ring set  $\varnothing 50$  mm

## GWA automatic HSK-F50 // $\varnothing 32$ mm // RS $\varnothing 50$ mm

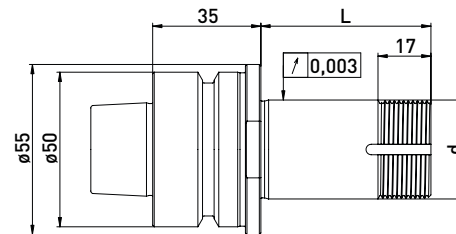
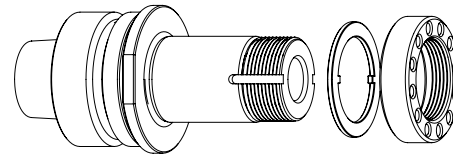


Delivered equipped:  
Ring set  $\varnothing 50$  mm, lock washer and clamping nut ANCA balancing hole

### Ring set $\varnothing 50$ mm

Order No.	HSK	d	L	B 20	B 10	B 4
300024212	HSK-F50	32	55	1	1	3
300024222	HSK-F50	32	72	2	1	2
300024232	HSK-F50	32	85	2	2	3
300024242	HSK-F50	32	95	3	1	3

## GWA automatic HSK-F50 // $\varnothing 32$ mm // without RS



Delivered equipped:  
Lock washer and clamping nut ANCA balancing hole

Order No.	HSK	d	L
300024211	HSK-F50	32	55
300024221	HSK-F50	32	72
300024231	HSK-F50	32	85
300024241	HSK-F50	32	95

## Accessories ANCA grinding wheel adapter automatic HSK-F50 // Shaft $\varnothing 32$ mm // Ring set $\varnothing 50$ mm

Order No.	Name	
350050010	Universal assembly device $\varnothing 50$	
350040030	Clamping nut wrench PC39 for ANCA nut	
350020027	*Balancing weight pair for clamping nut $\varnothing 47$ // 70gmm	

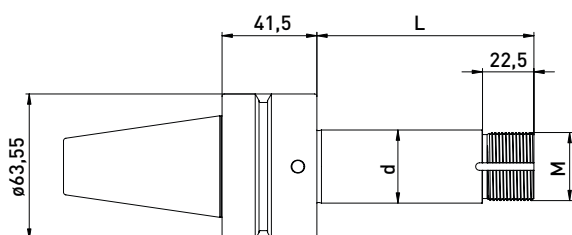
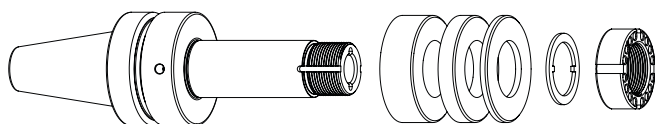
Order No.	Name	
350011220	Spacer ring $\varnothing 50$ x $\varnothing 32$ x 20	
350011210	Spacer ring $\varnothing 50$ x $\varnothing 32$ x 10	
350011204	Spacer ring $\varnothing 50$ x $\varnothing 32$ x 4	
350030040	Lock washer $\varnothing 43$ x $\varnothing 32$ x 2	
350020050	Clamping nut ANCA balancing hole M31,5 x 1,5 $\varnothing 47$ x 12	
350020026	*Clamping nut with balancing option M31,5 x 1,5 $\varnothing 47$ x 12	



# ANCA similar SK40 with flat contact face

For ANCA tool grinding machines

## GWA similar SK40 with flat contact face



Delivered equipped:  
**Ring set, lock washer and clamping nut with balancing option**

Order No.	Fine thread	d	L	Ring set		
				B 20	B 10	B 4
300026052	M20 x 1,5	20	95	2	2	4
300026152	M30 x 1,5	31,75	95	2	2	4
300026252	M30 x 1,5	32	95	2	2	4
300026952	M50 x 1,5	50,8	95	2	2	4

## Accessories GWA similar SK40 with flat contact face

Order No.	Name	
350011020	Spacer ring $\phi 50 \times \phi 20 \times 20$	
350011010	Spacer ring $\phi 50 \times \phi 20 \times 10$	
350011004	Spacer ring $\phi 50 \times \phi 20 \times 4$	
350011420	Spacer ring $\phi 60 \times \phi 31,75 \times 20$	
350011410	Spacer ring $\phi 60 \times \phi 31,75 \times 10$	
350011404	Spacer ring $\phi 60 \times \phi 31,75 \times 4$	
350011320	Spacer ring $\phi 60 \times \phi 32 \times 20$	
350011310	Spacer ring $\phi 60 \times \phi 32 \times 10$	
350011304	Spacer ring $\phi 60 \times \phi 32 \times 4$	
250000549	Spacer ring $\phi 75 \times \phi 50,8 \times 20$	
250000548	Spacer ring $\phi 75 \times \phi 50,8 \times 10$	
250000547	Spacer ring $\phi 75 \times \phi 50,8 \times 4$	

## Accessories ANCA grinding wheel adapter similar SK40 with flat contact face

Order No.	Name	
250000552	Lock washer $\phi 37 \times \phi 20 \times 2$	
250000940	Lock washer $\phi 40 \times \phi 30 \times 2$	
250000550	Lock washer $\phi 64 \times \phi 50,2 \times 2$	

Order No.	Name	
250000553	Clamping nut with balancing option M20 x 1,5 - $\phi 40 \times 17$	
250000485	Clamping nut with balancing option M30 x 1,5 - $\phi 45 \times 17$	
250000551	Clamping nut with balancing option M50 x 1,5 - $\phi 70 \times 19$	
350300131	Hook wrench 40-42 mm	
350300132	Hook wrench 45-50 mm	
350300133	Hook wrench 68-75 mm	

\*related items



μGrind HPS 20 // HPS 20L



μGrind Nann 3409E



μGrind HSK



μGrind Hydro



Our Clamping and balancing technology catalogue contains all our quick-acting chucks.

In North America contact:

**Toolroom Solutions Inc.**

8824 Old Block House Ln  
Spotsylvania, VA 22551 USA

Tel: +1 (540) 940-5977  
Email: [info@toolroom.solutions](mailto:info@toolroom.solutions)  
Web: [www.toolroom.solutions](http://www.toolroom.solutions)



GDS Präzisionszerspanungs GmbH  
Endelbergstrasse 8  
D - 72131 Offerdingen

