



SHARK

5-Jaw Chuck

grinding deserves SOLUTIONS

GDS[®]
Made in Germany

SHARK - the 5-Jaw Chuck in high-precision GDS quality!



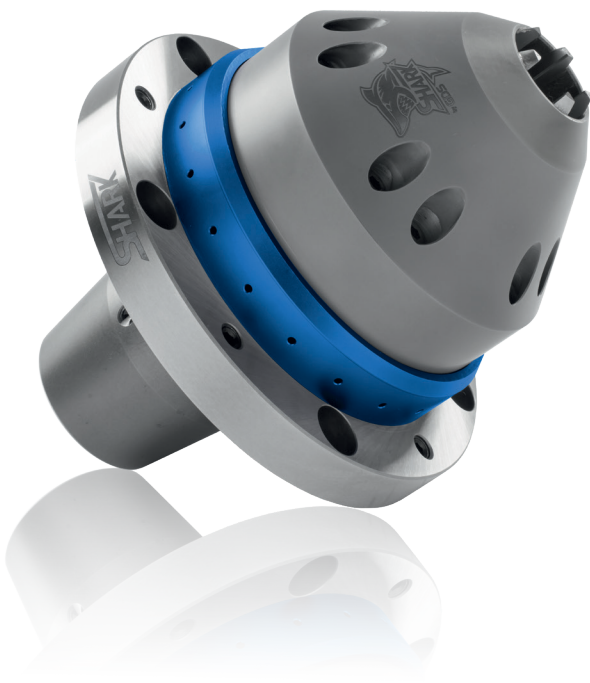
Tool grinding success requires achieving extreme precision and perfect quality while minimizing setup and tool-changing times. The GDS SHARK multi-range chuck helps you meet those challenges.

Specially designed for situations in which the shank diameter changes frequently, the SHARK **automatically clamps** directly onto the workpiece. You don't need collets or intermediate sleeves for **any** diameter within the **3 to 20 mm range**. Your set-up time is reduced to a minimum and you achieve a **set-up cost saving of up to 70%** compared to regular clamping devices.

The SHARK is just as suitable for manufacturing new tools as it is for resharpenering.

SHARK - versatile, flexible and highly accurate.

Your **flexible solution** in the clamping range **3-20 mm (1/8-3/4")**



Your advantages:

- Clamp any diameter from 3 - 20 mm (1/8-3/4") without collets or sleeves
- Runout ≤ 0.005 mm (≤ 2 tenths) at 2½xD
- No auxiliary tools required
- Concentricity can be precisely aligned
- Cost reduction due to setup time savings
- Manufacturing or regrinding

The **SHARK 5-Jaw Chuck** can be used in all common **tool grinders**

Readily available for the following machines:

ANCA TX, MX, and FX

WALTER machines with the SK50 workhead (Heli-tronic Vision, Power, Raptor, etc)



Also available for these machines **on request**:

ISOG
JOERG S-techplus
Reinecker
Saacke
Schütte
Star NXT
TGT
Utsunomiya-Seisakusho
Vollmer

High compatibility with all common machine manufacturers

The SHARK 5-jaw chuck can be bolted to any common tool grinder with an adapter flange. Our trained service personnel will be happy to help you determine the right version for your machine. Let us advise you and find the best solution for your work process.



Best results - even under the most difficult conditions

The SHARK's clamping jaws are in the same axial position at all times. And due to its unique new solid jaw guide, axial runout (wobble) can be reduced to a minimum. Thanks to the chuck's outstanding concentricity and repeatability...plus a profile that offers excellent wheel clearance...you achieve consistently excellent results, even with difficult processes.

During operation, the chuck is cleaned with an effective air purge (assuming your machine has this function). This prevents contamination and maintains absolute precision over the long term.

**Technical data:**

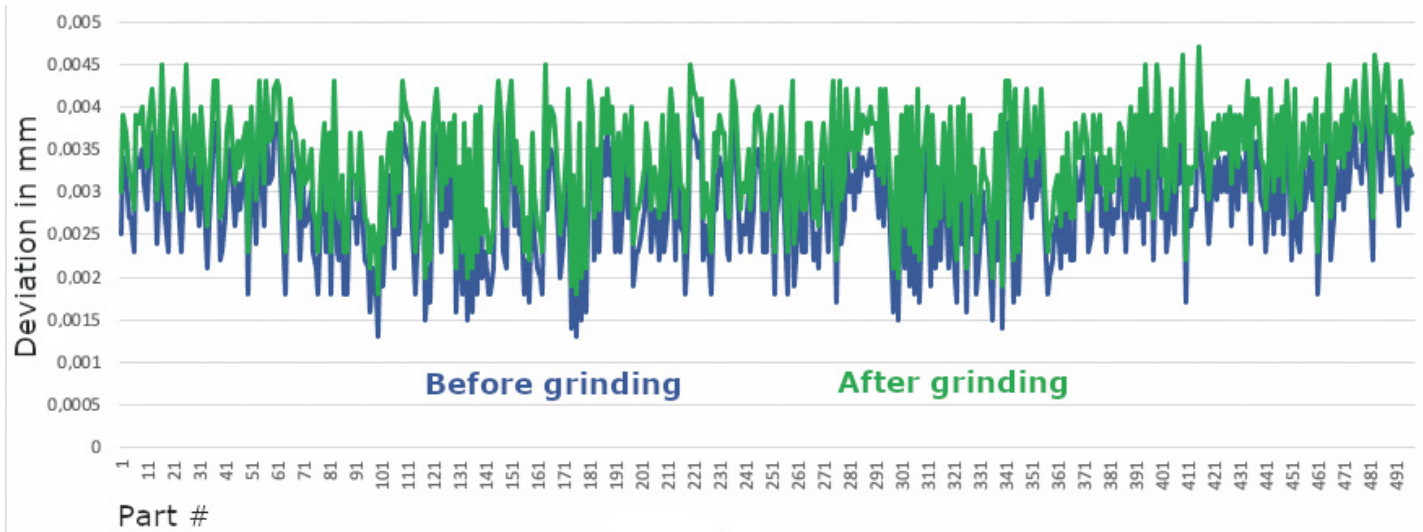
Number of jaws	Clamping depth (mm)	Clamping range (mm)	Clamping force max. (kN)	Pressure (MPa)	Weight (kg)	Speed max. (1/min)	Ø outside (mm)	Chuck length (mm)
5	100	3-20 mm	9.6	min. 6 bar	6.7	1200	148	122.5



The **SHARK 5-Jaw Chuck** is designed exclusively for **automatic operation**.



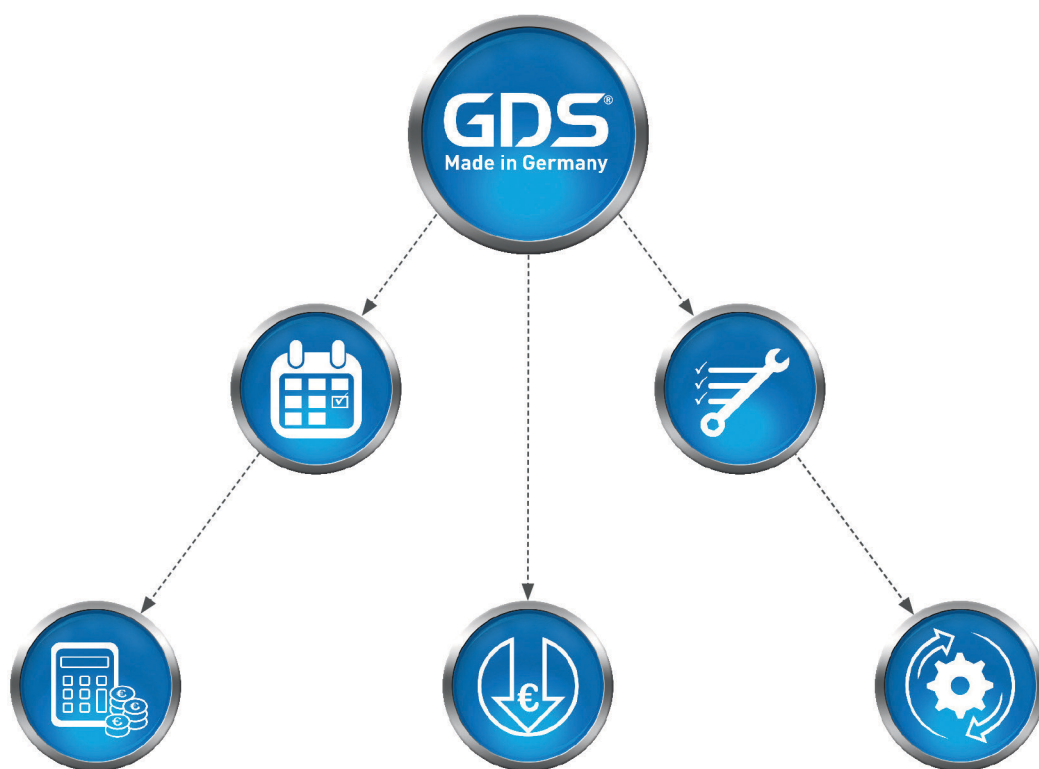
Test evaluation of the SHARK 5-Jaw Chuck



- Actuated by the machine's clamping cylinder
- Active air purge protects against contamination



Revolution in tool grinding



In North America contact:

Toolroom Solutions Inc.

8824 Old Block House Ln
Spotsylvania, VA 22551 USA

Tel: +1 (540) 940-5977

Email: info@toolroom.solutions

Web: www.toolroom.solutions



GDS Präzisionszerspanungs GmbH
Endelbergstrasse 8
D - 72131 Offerdingen

