

xGrind manual chuck



good better BLUE

GDS[®]
Made in Germany

The xGrind HPS 20 is the **high-precision manual chuck** of our xGrind series

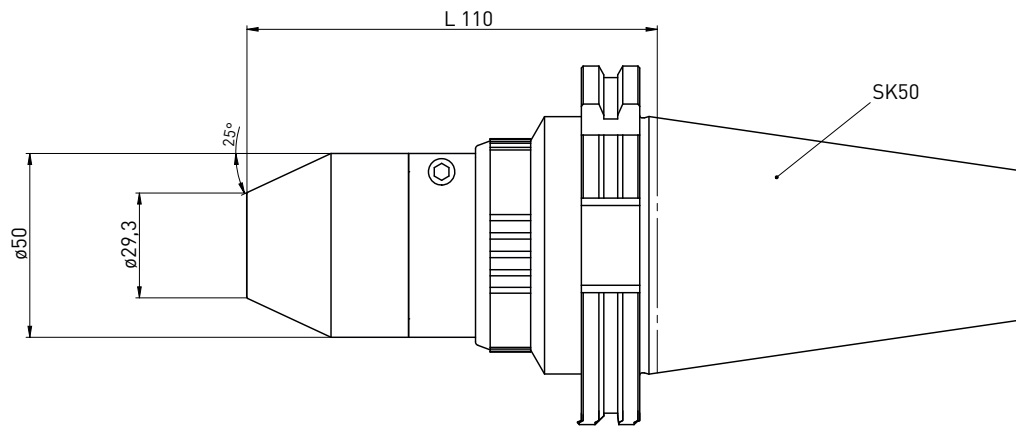


Developed specifically for high precision tool grinding, the xGrind HPS uses the same innovative collets as the amazing μ Grind HPS. The **xGrind HPS**:

- Delivers excellent concentricity and repeatability
- Offers excellent dampening properties for uniform material removal, optimized feed rates, excellent surface finish, and significantly reduced grinding wheel wear
- Requires a relatively short clamping length on the blank to achieve constant holding force and concentricity
- Features a tapered profile and smaller nose diameter than hydraulic holders for better wheel clearance and freedom from interference
- Extremely durable, with very low wear over thousands of clampings, for economical performance
- Affordable overhaul and repair options
- The clamping screw is at a more ergonomic angle than competing systems, reducing the risk of injury
- Requires half the screw revolutions to clamp, versus other techniques, saving time
- Handles shanks from 3 to 20 mm ($\frac{1}{8}$ to $\frac{3}{4}$ inches)
- Standard SK50 interface for nearly universal application

GDS -Precision is our passion

xGrind HPS 20 SK50



Delivery includes:

Wrench

| Item No. | Name | d | L |
|-----------|-----------------|------|-----|
| 400005000 | xGrind HPS SK50 | 29.3 | 110 |

HPS collets shown on the following pages

| Item No. | Name |
|-----------|--|
| 350270002 | Alignment set HPS (excl. dial gauges) |
| | Incl. ø8 and ø10 mm HPS collets and ø8 and ø10 mm high precision test blanks |
| 350270003 | Dial gauges (2 pcs.) |



Accessories:

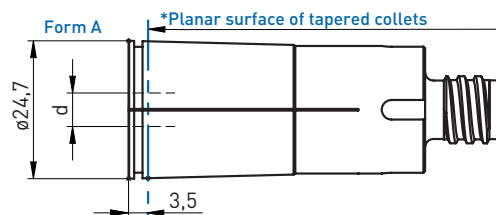
| Item No. | Name |
|-----------|-------------------------------|
| 350270004 | Torque screwdriver xGrind HPS |



HPS collets for xGrind HPS and μ Grind Booster HPS 20 // HPS 20 L

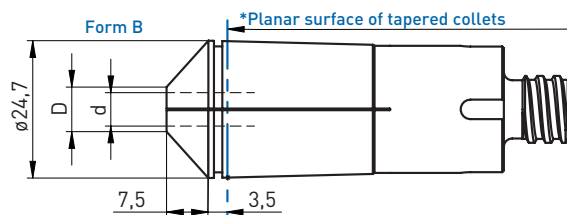


Flat collets:



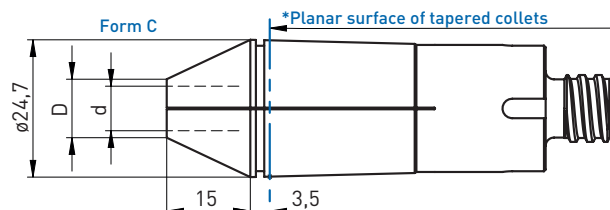
| Item No. | Name - $\varnothing d$ | Form |
|-----------|---------------------------------------|------|
| 350260003 | HPS collet 20 - $\varnothing 3$ mm | A |
| 350260004 | HPS collet 20 - $\varnothing 4$ mm | A |
| 350260005 | HPS collet 20 - $\varnothing 5$ mm | A |
| 350260006 | HPS collet 20 - $\varnothing 6$ mm | A |
| 350260007 | HPS collet 20 - $\varnothing 7$ mm | A |
| 350260008 | HPS collet 20 - $\varnothing 8$ mm | A |
| 350260009 | HPS collet 20 - $\varnothing 9$ mm | A |
| 350260010 | HPS collet 20 - $\varnothing 10$ mm | A |
| 350260011 | HPS collet 20 - $\varnothing 11$ mm | A |
| 350260012 | HPS collet 20 - $\varnothing 12$ mm | A |
| 350260013 | HPS collet 20 - $\varnothing 13$ mm | A |
| 350260014 | HPS collet 20 - $\varnothing 14$ mm | A |
| 350260015 | HPS collet 20 - $\varnothing 15$ mm | A |
| 350260016 | HPS collet 20 - $\varnothing 16$ mm | A |
| 350260017 | HPS collet 20 - $\varnothing 17$ mm | A |
| 350260018 | HPS collet 20 - $\varnothing 18$ mm | A |
| 350260019 | HPS collet 20 - $\varnothing 19$ mm | A |
| 350260020 | HPS collet 20 - $\varnothing 20$ mm | A |
| 350260201 | HPS collet 20 - $\varnothing 1/8''$ | A |
| 350260202 | HPS collet 20 - $\varnothing 3/16''$ | A |
| 350260203 | HPS collet 20 - $\varnothing 1/4''$ | A |
| 350260204 | HPS collet 20 - $\varnothing 5/16''$ | A |
| 350260205 | HPS collet 20 - $\varnothing 3/8''$ | A |
| 350260206 | HPS collet 20 - $\varnothing 7/16''$ | A |
| 350260207 | HPS collet 20 - $\varnothing 1/2''$ | A |
| 350260208 | HPS collet 20 - $\varnothing 9/16''$ | A |
| 350260209 | HPS collet 20 - $\varnothing 5/8''$ | A |
| 350260210 | HPS collet 20 - $\varnothing 11/16''$ | A |
| 350260211 | HPS collet 20 - $\varnothing 3/4''$ | A |

Short tapered collets:



| Item No. | Name - $\varnothing d$ | Form |
|-----------|--|------|
| 350260130 | HPS collet 20K - $\varnothing 2,35$ mm | B |
| 350260103 | HPS collet 20K - $\varnothing 3$ mm | B |
| 350260104 | HPS collet 20K - $\varnothing 4$ mm | B |
| 350260105 | HPS collet 20K - $\varnothing 5$ mm | B |
| 350260106 | HPS collet 20K - $\varnothing 6$ mm | B |
| 350260301 | HPS collet 20K - $\varnothing 1/8''$ | B |
| 350260302 | HPS collet 20K - $\varnothing 3/16''$ | B |
| 350260303 | HPS collet 20K - $\varnothing 1/4''$ | B |

Tapered collets:



| Item No. | Name - $\varnothing d$ | Form |
|-----------|---------------------------------------|------|
| 350260107 | HPS collet 20K - $\varnothing 7$ mm | C |
| 350260108 | HPS collet 20K - $\varnothing 8$ mm | C |
| 350260109 | HPS collet 20K - $\varnothing 9$ mm | C |
| 350260110 | HPS collet 20K - $\varnothing 10$ mm | C |
| 350260111 | HPS collet 20K - $\varnothing 11$ mm | C |
| 350260112 | HPS collet 20K - $\varnothing 12$ mm | C |
| 350260304 | HPS collet 20K - $\varnothing 5/16''$ | C |
| 350260305 | HPS collet 20K - $\varnothing 3/8''$ | C |
| 350260306 | HPS collet 20K - $\varnothing 7/16''$ | C |
| 350260307 | HPS collet 20K - $\varnothing 1/2''$ | C |



Best TIR achieved with minimum clamping depth of $2.5 \times \varnothing$ from
*clamping chuck's plane surface.

The xGrind Hydro is our manual **hydraulic chuck with SK50 taper**

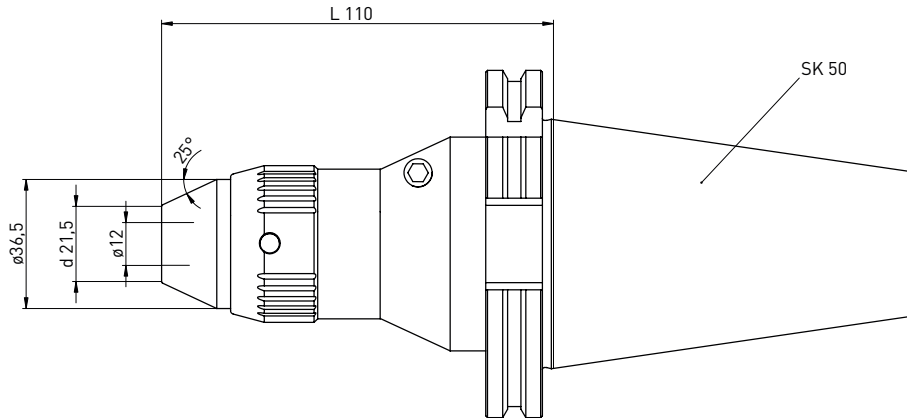


The xGrind Hydro is a manually activated hydraulic chuck developed by GDS specifically for high precision tool grinding. The xGrind **Hydro**:

- **Delivers excellent concentricity and repeatability**
- **Offers excellent dampening properties for uniform material removal, optimized feed rates, excellent surface finish, and significantly reduced grinding wheel wear**
- **Features a tapered profile and smaller nose diameter than other hydraulic holders for better wheel clearance and freedom from interference**
- **Tougher than competing systems and can be rebuilt economically for long term use**
- **The clamping screw is at a more ergonomic angle than competing systems, reducing the risk of injury**
- **NEW SafeGrip protects against slipping, for safe and easy handling**
- **Available in three diameters (12, 20 and 32 mm). Each chuck clamps its native diameter plus smaller diameters using standard intermediate sleeves:**
 - 12 mm chuck: Sleeves for 3-8 mm
 - 20 mm chuck: Sleeves for 3-18 mm
 - 32 mm chuck: Sleeves for 6-25 mm
- **Standard SK50 interface for nearly universal application**

GDS - Precision is our passion

xGrind Hydro SK50 ø12 mm



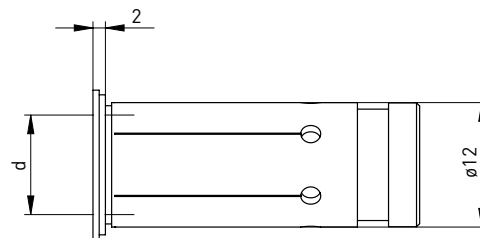
Delivery includes:

Wrench

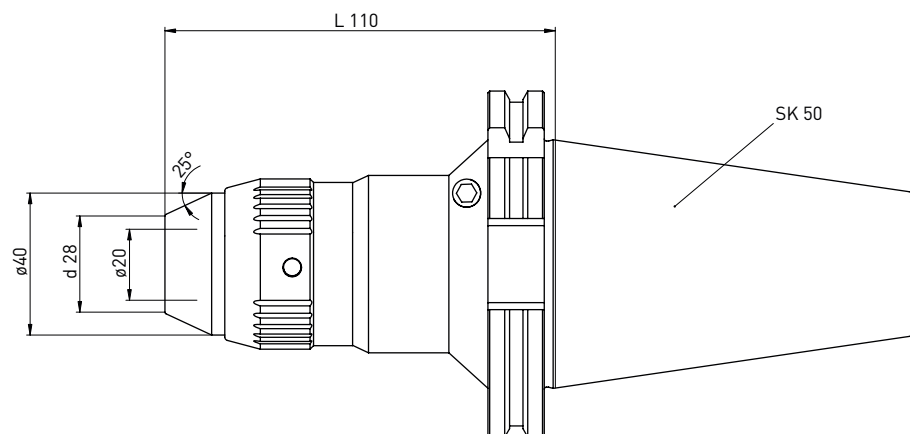
| Item No. | Name | d | L |
|-----------|-----------------------|------|-----|
| 400005001 | xGrind Hydro SK50 ø12 | 21.5 | 110 |

Accessories:

| Item No. | Name | d |
|-----------|-----------------------------|---|
| 350110601 | GDS intermediate sleeve ø12 | 3 |
| 350110602 | GDS intermediate sleeve ø12 | 4 |
| 350110603 | GDS intermediate sleeve ø12 | 5 |
| 350110604 | GDS intermediate sleeve ø12 | 6 |
| 350110605 | GDS intermediate sleeve ø12 | 8 |



xGrind Hydro SK50 ø20 mm



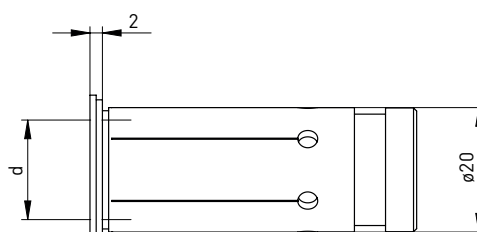
Delivery includes:

Wrench

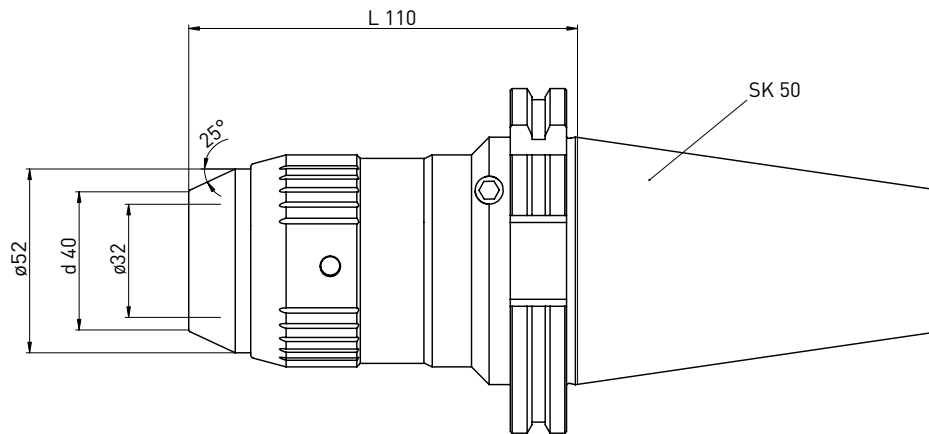
| Item No. | Name | d | L |
|-----------|-----------------------|----|-----|
| 400005002 | xGrind Hydro SK50 ø20 | 28 | 110 |

Accessories:

| Item No. | Name | d |
|-----------|-----------------------------|----|
| 350110606 | GDS intermediate sleeve ø20 | 3 |
| 350110607 | GDS intermediate sleeve ø20 | 4 |
| 350110608 | GDS intermediate sleeve ø20 | 5 |
| 350110609 | GDS intermediate sleeve ø20 | 6 |
| 350110610 | GDS intermediate sleeve ø20 | 7 |
| 350110611 | GDS intermediate sleeve ø20 | 8 |
| 350110612 | GDS intermediate sleeve ø20 | 9 |
| 350110613 | GDS intermediate sleeve ø20 | 10 |
| 350110614 | GDS intermediate sleeve ø20 | 11 |
| 350110615 | GDS intermediate sleeve ø20 | 12 |
| 350110616 | GDS intermediate sleeve ø20 | 13 |
| 350110617 | GDS intermediate sleeve ø20 | 14 |
| 350110618 | GDS intermediate sleeve ø20 | 15 |
| 350110619 | GDS intermediate sleeve ø20 | 16 |



xGrind Hydro SK50 ø32 mm



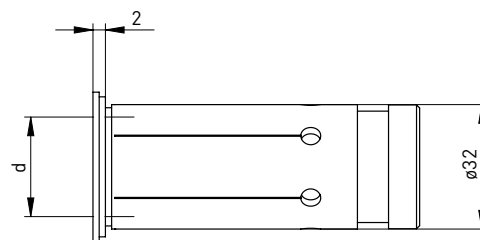
Delivery includes:

Wrench

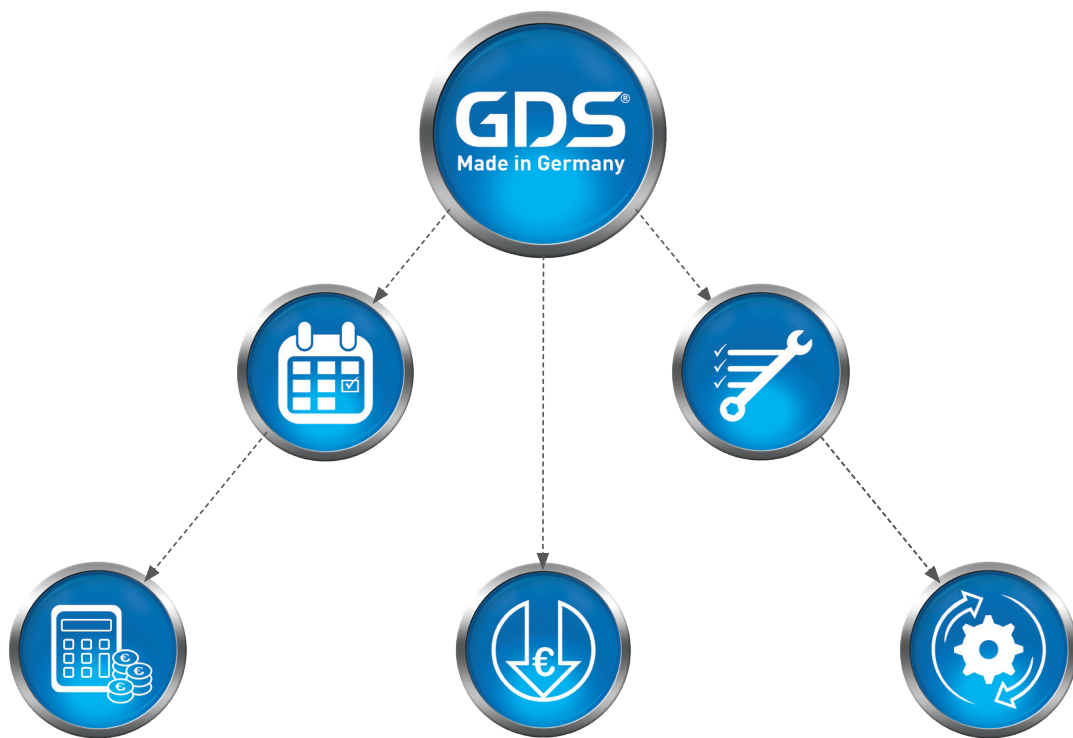
| Item No. | Name | d | L |
|-----------|-----------------------|----|-----|
| 400005003 | xGrind Hydro SK50 ø32 | 40 | 110 |

Accessories:

| Item No. | Name | d |
|-----------|-----------------------------|----|
| 350110707 | GDS intermediate sleeve ø32 | 6 |
| 350110708 | GDS intermediate sleeve ø32 | 8 |
| 350110709 | GDS intermediate sleeve ø32 | 10 |
| 350110710 | GDS intermediate sleeve ø32 | 12 |
| 350110711 | GDS intermediate sleeve ø32 | 14 |
| 350110712 | GDS intermediate sleeve ø32 | 16 |
| 350110713 | GDS intermediate sleeve ø32 | 18 |
| 350110714 | GDS intermediate sleeve ø32 | 20 |
| 350110715 | GDS intermediate sleeve ø32 | 25 |



Revolution in tool grinding



In North America contact:

Toolroom Solutions Inc.

8824 Old Block House Ln
Spotsylvania, VA 22551 USA

Tel: +1 (540) 940-5977

Email: info@toolroom.solutions

Web: www.toolroom.solutions

GDS[®]
Made in Germany

GDS Präzisionszerspanungs GmbH
Endelbergstrasse 8
D - 72131 Ofterdingen

