

Viper automatic chuck



good better BLUE

GDS[®]
Made in Germany

VIPER is **the powerhouse** of our GDS clamping series
Precise, fast, versatile & strong – **perfectly equipped for wide variety of applications**



VIPER technology has been developed especially for high-performance grinding centers.

Built for use with high precision ~8° collets, Viper delivers intense holding forces for a consistent grinding process. Its fast setup, huge diameter range, deep collet depth, and high repeatability make it perfect for a wide variety of tool manufacturing and regrinding needs.

Combined with our CoFix wrench, you reduce set-up times to a minimum as you change your collets easier, quicker and safer than ever before.

VIPER technology – perfectly equipped for a wide variety of applications

GDS - Precision is our passion

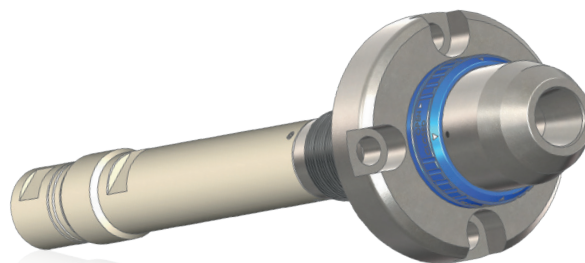
Intense holding forces, versatile applicability and high repeatability with minimal set-up times are basic requirements of economical and cost-efficient manufacturing.



- Extreme holding forces for consistent grinding performance
- High concentricity and repeatability: TIR of ~5 microns (2 tenths) at 2½xD
- Adjustable run-out
- Huge clamping range using standard Nann collets
- Extremely durable
- Safe and easy collet change within seconds using GDS' CoFix wrench



GDS VIPER M
Nann 3409E Micro



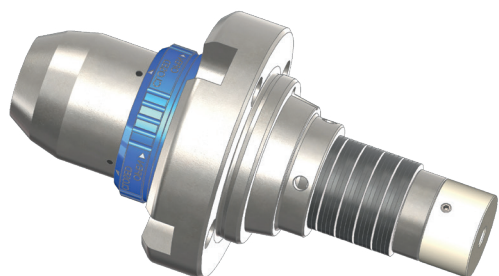
GDS VIPER S
Nann 3148E Mini/G200



VIPER S
Nann 3148E



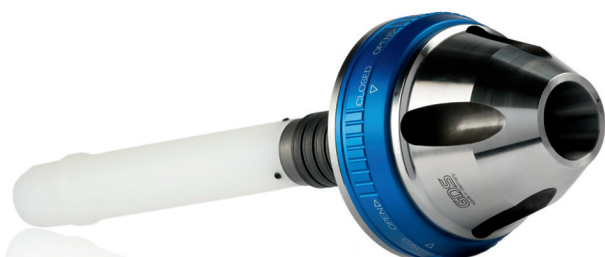
VIPER L
Nann 3718E



GDS VIPER S
Nann 3148E Micro



VIPER M
Nann 3409E

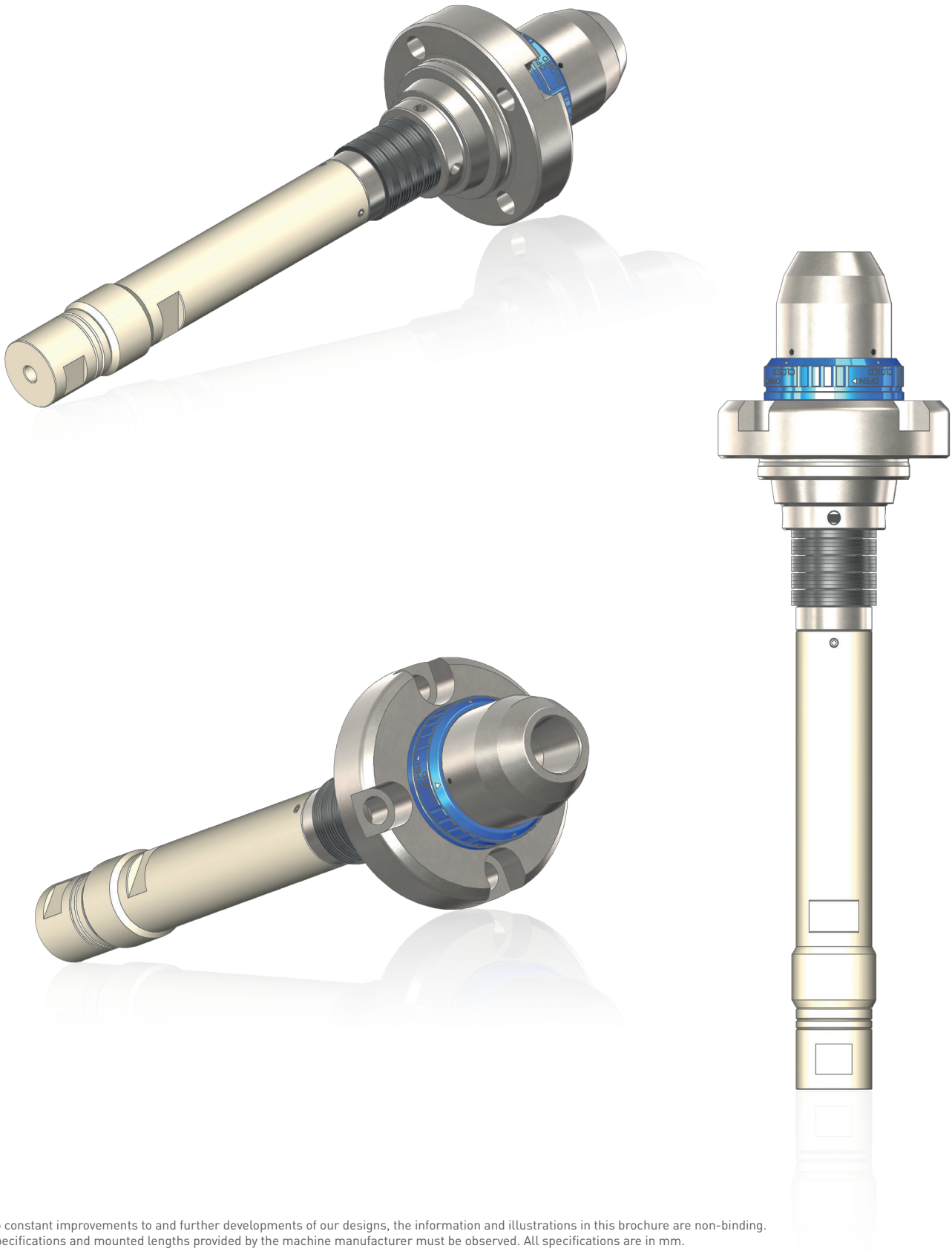


GDS VIPER M
Nann 3409E Mini/G200

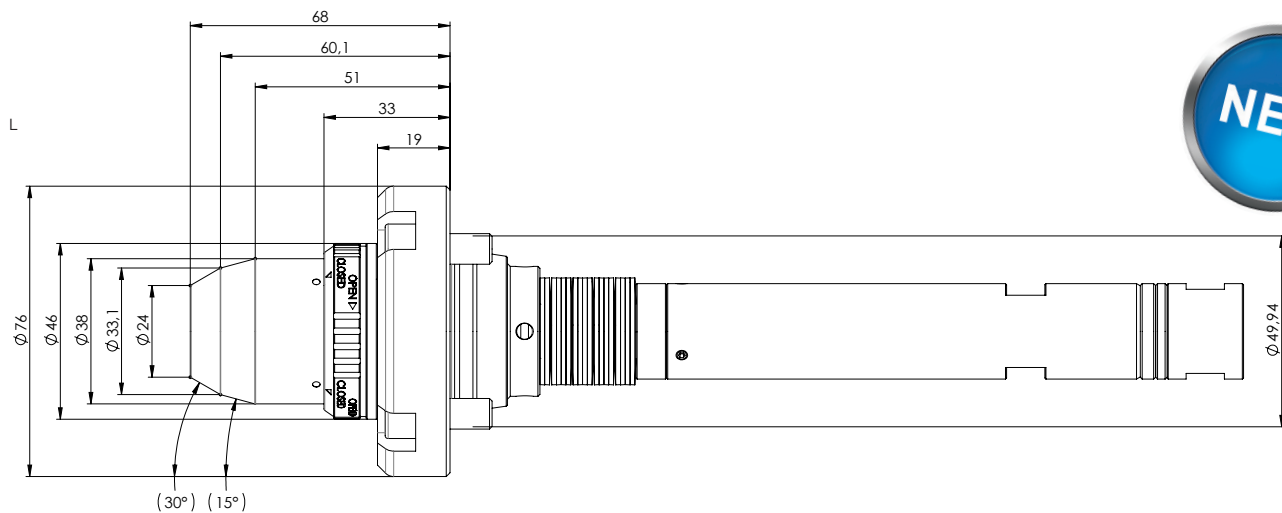


VIPER XL
Nann 3851E

VIPER S Nann 3148 E Mini/G200 **NANN**  Collet - maximum bore $\varnothing 10$



VIPER S Nann 3148 E Mini/G200 **NANN**  Collet - maximum bore $\varnothing 10$



Delivery includes:

USB flash drive with instructions, actuating pushrod

For machine model:

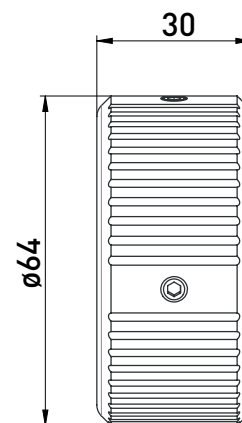


Helitronic Mini Automation

| Item No. | Name | D | L |
|-----------|---------------------------------|-------|----|
| 400004018 | VIPER S Nann 3148E Mini/G200 | 49.95 | 68 |

Accessories:

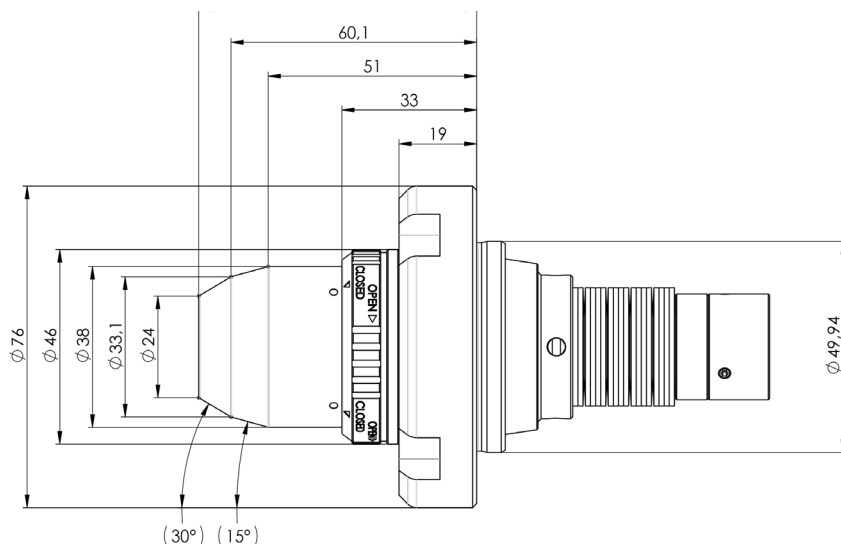
| Item No. | Name |
|-----------|---|
| 350060013 | Cofix 12 screw-in tool for W15 and Nann 3148E collets |



VIPER S Nann 3148E Micro **NANN**  Collet - maximum bore $\varnothing 10$



VIPER S **Nann 3148E Micro** **NANN**  Collet - maximum bore $\varnothing 10$



Delivery includes:

USB flash drive with instructions, actuating pushrod

For machine model:

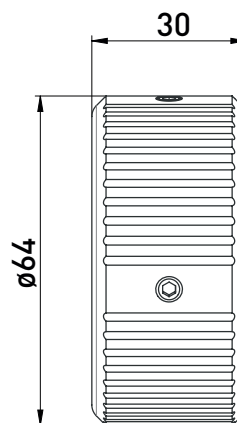


Helitronic Micro

| Item No. | Name | D | L |
|-----------|-----------------------------|-------|----|
| 400004019 | VIPER S Nann 3148E Micro | 49.95 | 68 |

Accessories:

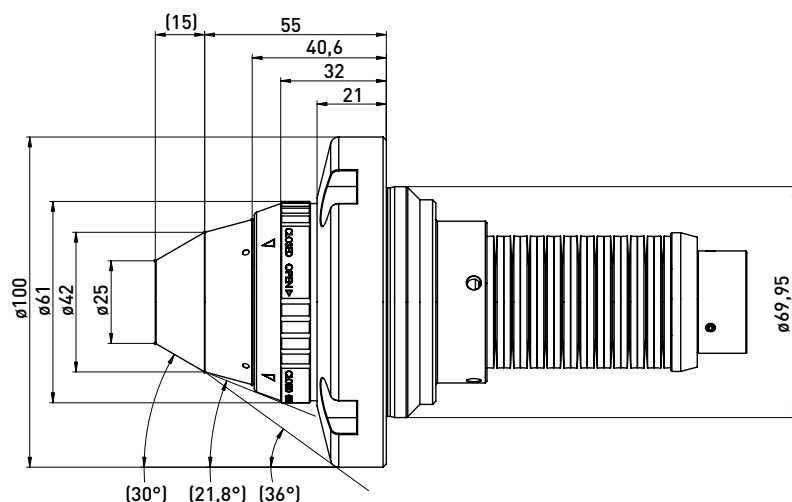
| Item No. | Name |
|-----------|--|
| 350060013 | Cofix 12 screw-in tool for W15 and Nann 3148E collets |



VIPER S Nann 3148E **NANN**  Collet - maximum bore $\varnothing 10$



VIPER S Nann 3148E **NANN**  Collet - maximum bore $\varnothing 10$



Delivery includes:

USB flash drive with instructions, actuating pushrod

| Item No. | Name | D | L |
|-----------|-----------------------|-------|----|
| 400004014 | VIPER S Nann 3148E | 69.95 | 70 |

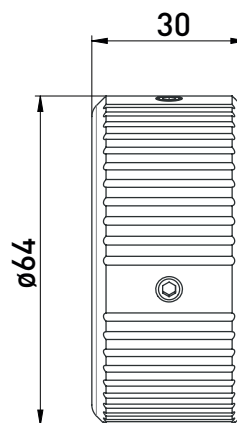
Available for the following machines:



Helitronic Mini Power
 ([excluding Helitronic Mini Automation])
 Helitronic Power/Raptor
 Helitronic Vision
 Helitronic Essential
 Essential Automation

Accessories:

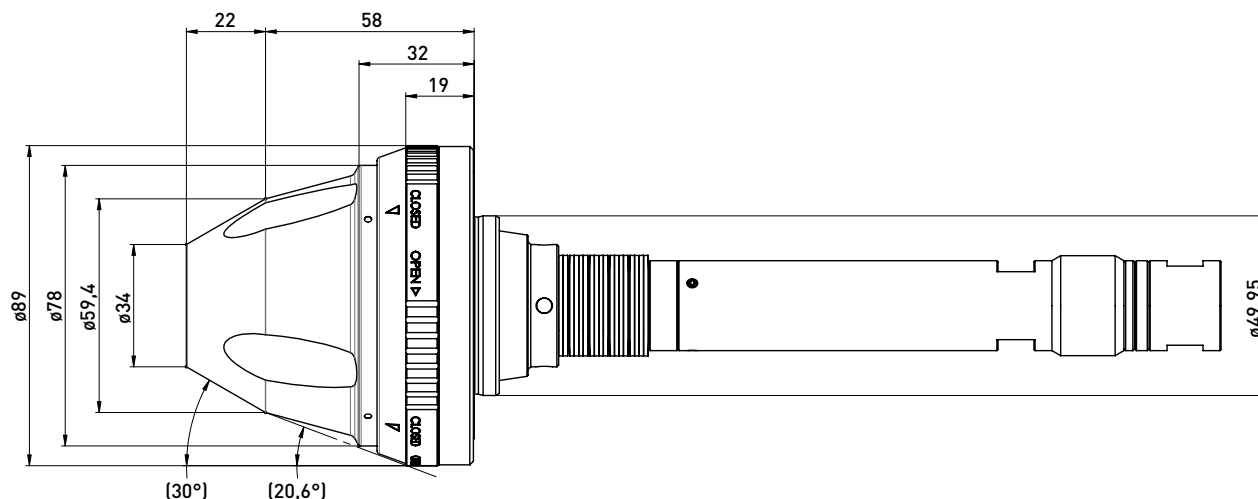
| Item No. | Name |
|-----------|--|
| 350060013 | Cofix 12 screw-in tool for W15 and Nann 3148E collets |



VIPER M Nann 3409E Mini/G200 **NANN**  Collet - maximum bore $\varnothing 16$



VIPER M **Nann 3409E Mini/G200** **NANN**  Collet - maximum bore $\varnothing 16$



Delivery includes:

USB flash drive with instructions, actuating pushrod

For machine model:

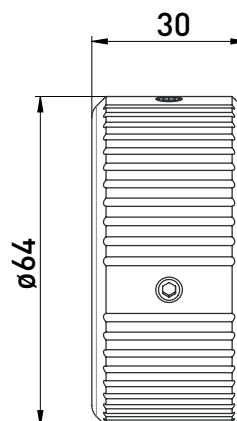


Helitronic Mini Automation

| Item No. | Name | D | L |
|-----------|------------------------------|-------|----|
| 400004003 | VIPER M Nann 3409E Mini/G200 | 49.95 | 80 |

Accessories:

| Item No. | Name |
|-----------|---|
| 350060012 | CoFix 20 screw-in tool for W20 and Nann 3409E collets |

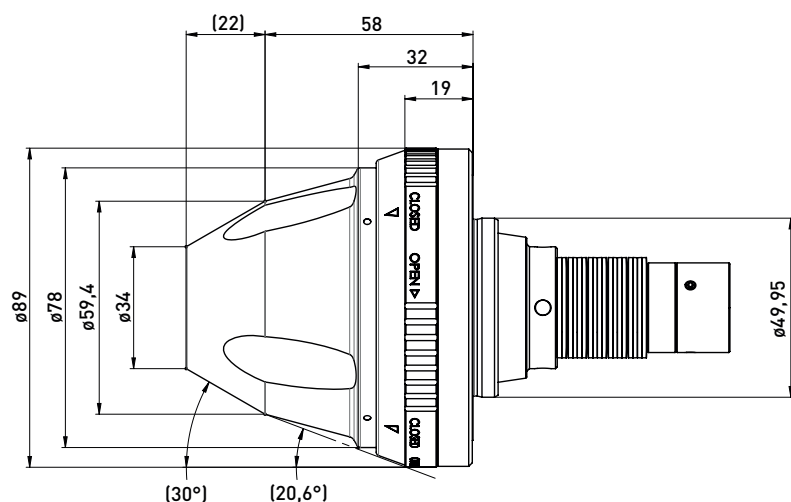


VIPER M **Nann 3409E Micro**   Collet - maximum bore $\varnothing 16$



VIPER M **Nann 3409E Micro** 

Collet - maximum bore $\varnothing 16$



Delivery includes:

USB flash drive with instructions, actuating pushrod

For machine model:

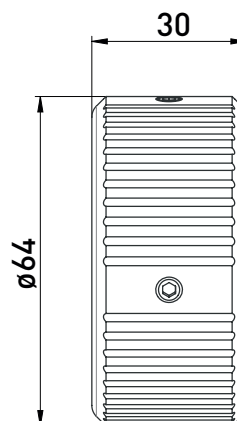


Helitronic Micro

| Item No. | Name | D | L |
|-----------|-----------------------------|-------|----|
| 400004002 | VIPER M Nann 3409E Micro | 49.95 | 80 |

Accessories:

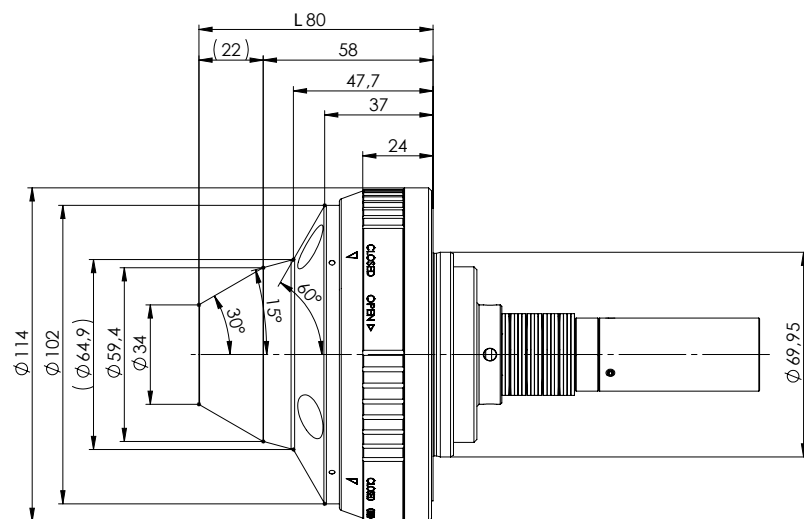
| Item No. | Name |
|-----------|--|
| 350060012 | CoFix 20 screw-in tool for W20 and Nann 3409E collets |



VIPER M Nann 3409E **NANN**  Collet - maximum bore $\varnothing 16$



VIPER M Nann 3409E Collet - maximum bore $\varnothing 16$



Delivery includes:

USB flash drive with instructions, actuating pushrod

Available for the following machines:

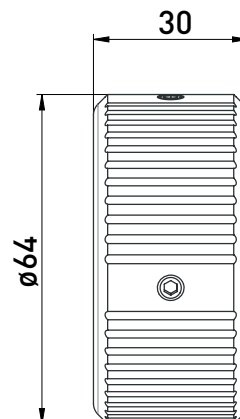


Helitronic Mini Power
 ((excluding Helitronic Mini Automation))
 Helitronic Power/Raptor
 Helitronic Vision
 Helitronic Essential
 Essential Automation

Accessories:

| Item No. | Name |
|----------|------|
|----------|------|

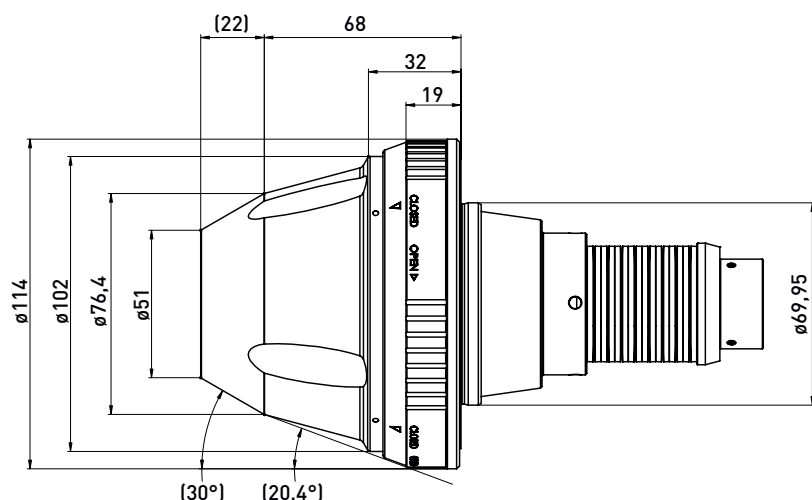
| | |
|-----------|---|
| 350060012 | Cofix 20 screw-in tool for W20 and Nann 3409E collets |
|-----------|---|



VIPER L Nann 3718E **NANN**  Collet - maximum bore $\varnothing 27$



VIPER L Nann 3718E Collet - maximum bore $\varnothing 27$



Delivery includes:

USB flash drive with instructions, actuating pushrod

| Item No. | Name | D | L |
|-----------|-----------------------|-------|----|
| 400004012 | VIPER L Nann 3718E | 69.95 | 90 |

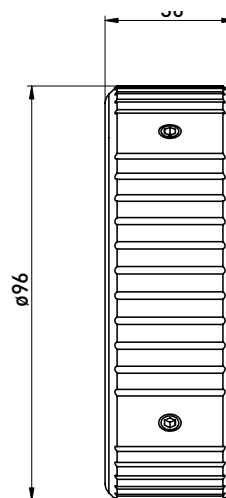
Available for the following machines:



Helitronic Mini Power
 ((excluding Helitronic Mini Automation))
 Helitronic Power/Raptor
 Helitronic Vision
 Helitronic Essential

Accessories:

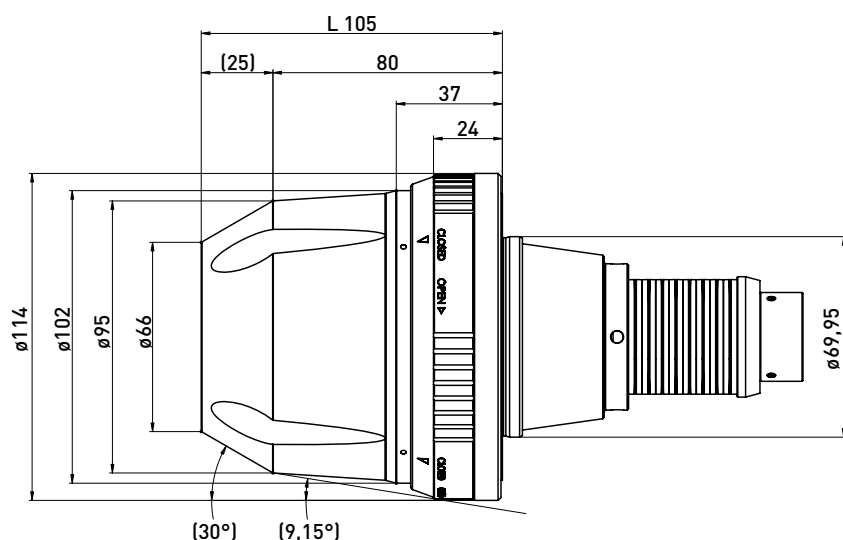
| Item No. | Name |
|-----------|--|
| 350060014 | Cofix 32 screw-in tool for Nann 3718E collets |



VIPER XL Nann 3851E **NANN**  Collet - maximum bore $\varnothing 38$



VIPER XL Nann 3851E **NANN**  Collet - maximum bore $\varnothing 36$



Delivery includes:

USB flash drive with instructions, actuating pushrod

| Item No. | Name | D | L |
|-----------|------------------------|-------|-----|
| 400004013 | VIPER XL Nann 3851E | 69.95 | 105 |

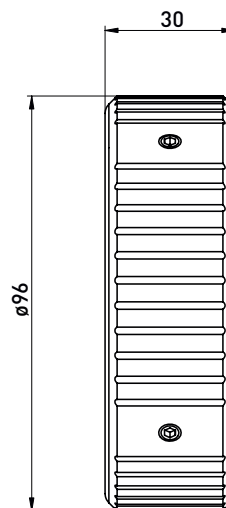
Available for following machines:



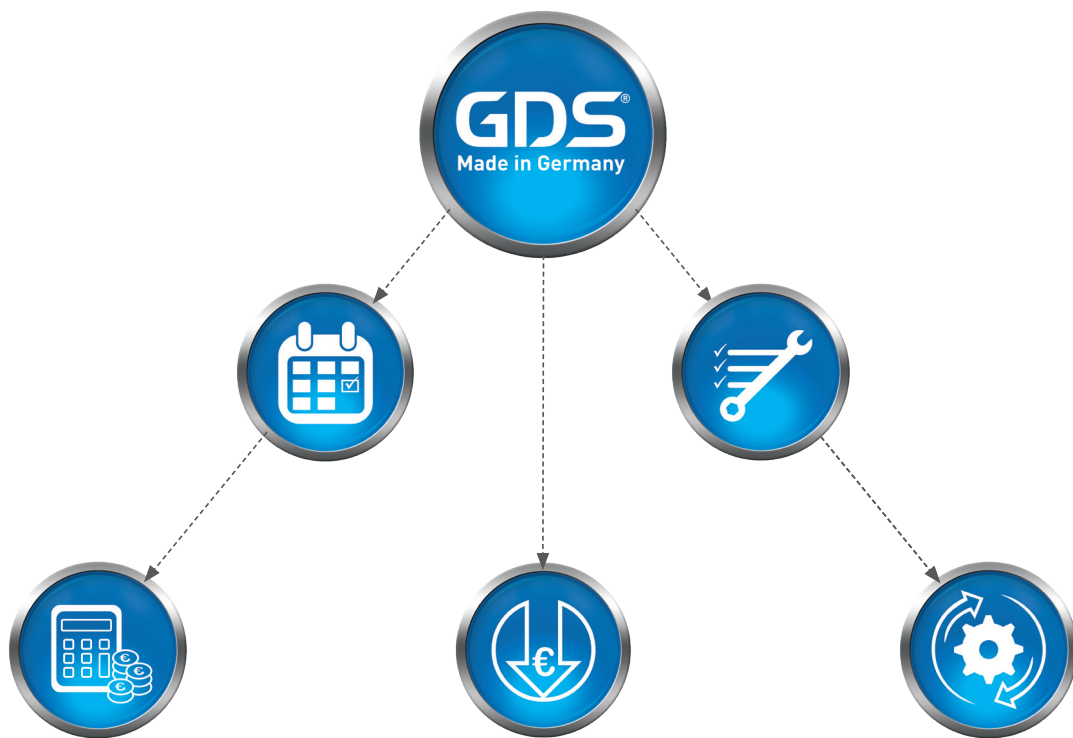
Helitronic Mini Power
 ((excluding Helitronic Mini Automation))
 Helitronic Power/Raptor
 Helitronic Vision
 Helitronic Essential

Accessories:

| Item No. | Name |
|-----------|--|
| 350060015 | Cofix 45 screw-in tool for Nann 3851E collets |



Revolution in tool grinding



In North America contact:

Toolroom Solutions Inc.

8824 Old Block House Ln
Spotsylvania, VA 22551 USA

Tel: +1 (540) 940-5977

Email: info@toolroom.solutions

Web: www.toolroom.solutions



GDS Präzisionszerspanungs GmbH
Endelbergstrasse 8
D - 72131 Ofterdingen

