

Clamp Stick expanding mandrel



good better BLUE

GDS[®]
Made in Germany

Clamp stick is our product line for **clamping tools with an internal bore**



GDS clamp sticks are expanding mandrels with extremely tight concentricity and runout tolerances. These properties allow you to manufacture and resharpen tools with high precision.

Its fast and easy handling offers you enormous flexibility.

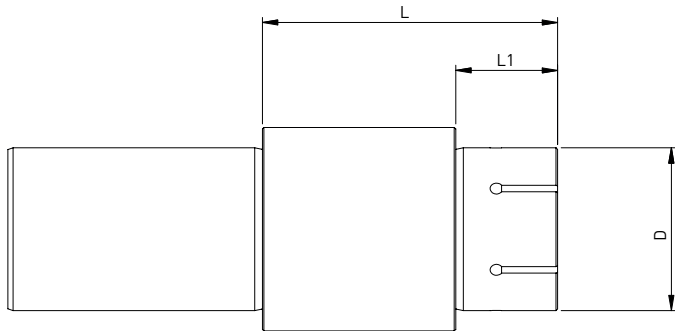
Best geometries, highest manufacturing precision, and consistent quality are the prominent features of the GDS clamp stick series.

GDS - Precision is our passion



- Slim profile for optimal grinding wheel clearance and selection flexibility
- Excellent concentricity and runout properties
- Various clamping diameters available
- Available with cylindrical shank or with SK50 taper interface

Clamp Stick **expanding mandrel with cylindrical shank**



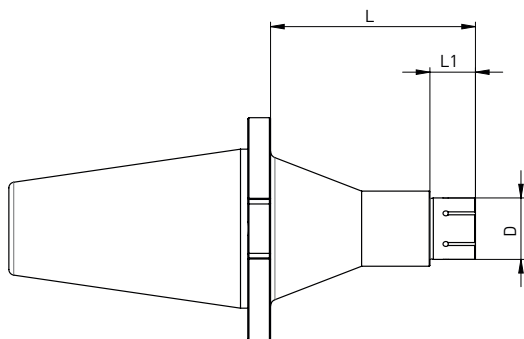
Shank tolerance: $\leq H7$
 Concentricity: $\leq 5\mu m$
 Maximum expansion: 0.1 mm

L: Overall length beyond the flange face // L1: Clamping length // D: Clamping diameter

Item No.	Name	L1	D
303001013	Mandrel $\varnothing 20 \times L53 \times \varnothing 13$	15	13
303001016	Mandrel $\varnothing 20 \times L53 \times \varnothing 16$	15	16
303001022	Mandrel $\varnothing 20 \times L56 \times \varnothing 22$	18	22
303001027	Mandrel $\varnothing 20 \times L58 \times \varnothing 27$	20	27
303001032	Mandrel $\varnothing 20 \times L62 \times \varnothing 32$	24	32
303001040	Mandrel $\varnothing 20 \times L64 \times \varnothing 40$	26	40

Item No.	Name	L1	D
303002013	Mandrel $\varnothing 32 \times L53 \times \varnothing 13$	15	13
303002016	Mandrel $\varnothing 32 \times L53 \times \varnothing 16$	15	16
303002022	Mandrel $\varnothing 32 \times L56 \times \varnothing 22$	18	22
303002027	Mandrel $\varnothing 32 \times L58 \times \varnothing 27$	20	27
303002032	Mandrel $\varnothing 32 \times L62 \times \varnothing 32$	24	32
303002040	Mandrel $\varnothing 32 \times L64 \times \varnothing 40$	26	40

Clamp Stick **expanding mandrel with SK50 taper**

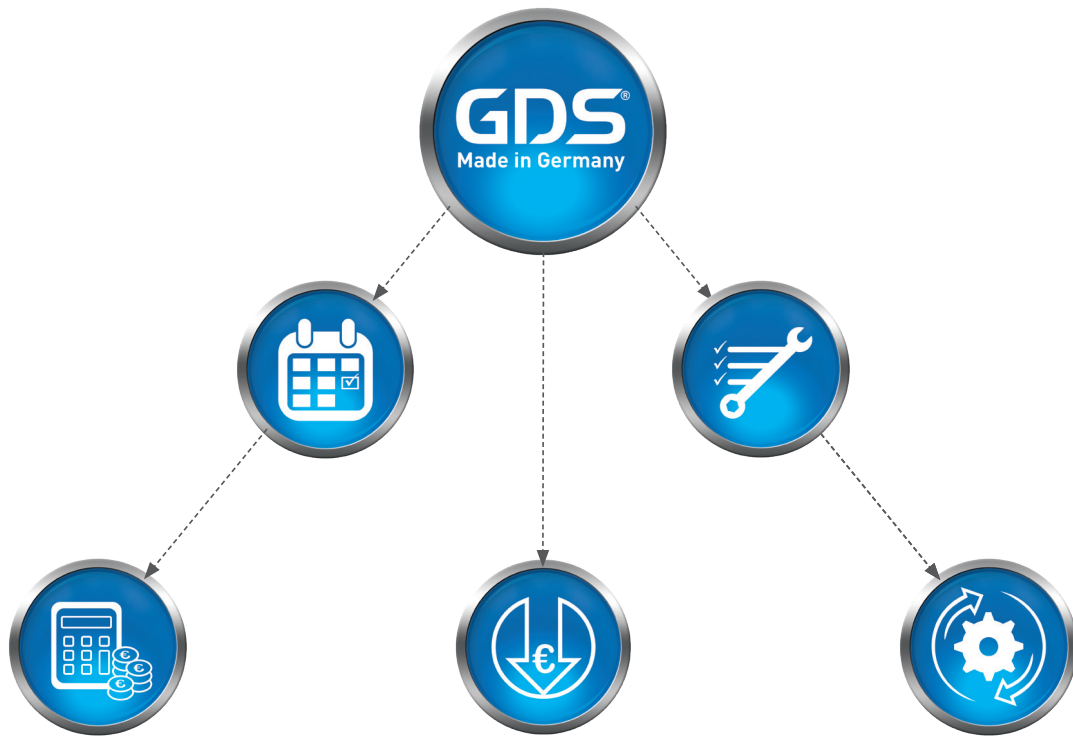


Shank tolerance: $\leq H7$
 Concentricity: $\leq 5\mu m$
 Maximum expansion: 0.1 mm

L: Overall length beyond the flange face // L1: Clamping length // D: Clamping diameter

Item No.	Name	L2	D
303003016	Mandrel SK50 x L98 x $\varnothing 16$	15	16
303003022	Mandrel SK50 x L101 x $\varnothing 22$	18	22
303003027	Mandrel SK50 x L103 x $\varnothing 27$	20	27
303003032	Mandrel SK50 x L105 x $\varnothing 32$	24	32
303003040	Mandrel SK50 x L107 x $\varnothing 40$	26	40

Revolution in tool grinding



In North America contact:

Toolroom Solutions Inc.

8824 Old Block House Ln
Spotsylvania, VA 22551 USA

Tel: +1 (540) 940-5977

Email: info@toolroom.solutions

Web: www.toolroom.solutions



GDS Präzisionszerspanungs GmbH
Endelbergstrasse 8
D - 72131 Ofterdingen

