

# Grinding wheel adapters

and  
Accessories



good better BLUE

20 YEARS  
since 1998 GDS



## Grinding wheel adapter and accessories

Precision grinding requires an optimal spindle and a flawless grinding wheel, both of which depend on a perfect grinding wheel adapter.

# "Our quality for your success"

We adapt to your requirements and guarantee our quality.

**GDS** - the precision makers



Our grinding wheel adapters are characterised by the following:



Maximum taper accuracy by using constantly controlled and calibrated measuring equipment.



Absolute accuracy of fit and optimum radial and axial run-out.



Extreme load-bearing capacity due to the use of tempered material and the best heat treating processes.



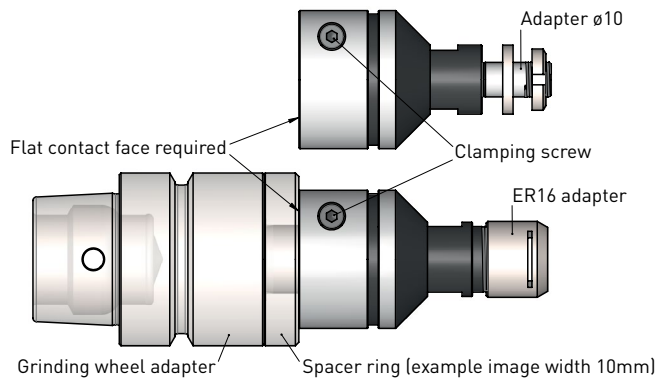
Optimum surface quality and associated long-term dimensional stability and precision, as well as spindle protection as a result of finished surfaces.



Balanced models for improved grinding results and spindle life.

# Reduction adapters for grinding wheel adapters

## Adapters for grinding wheel adapters from $\varnothing 20$ to $\varnothing 10$ // and $\varnothing 20$ to ER16 collet chuck



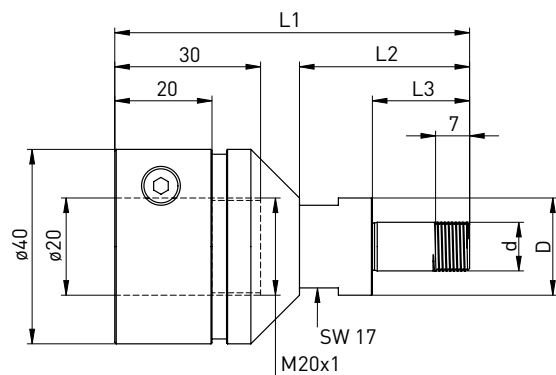
### Assembly example

Twist adapter onto M20 x 1 screw and bring to rear to flat contact face.

If needed, lay spacers down first so that the adapter meets the flat contact face.

Subsequently, tighten using spanner flat and secure with clamping screw.

### Adapter $\varnothing 20$ on $\varnothing 10$

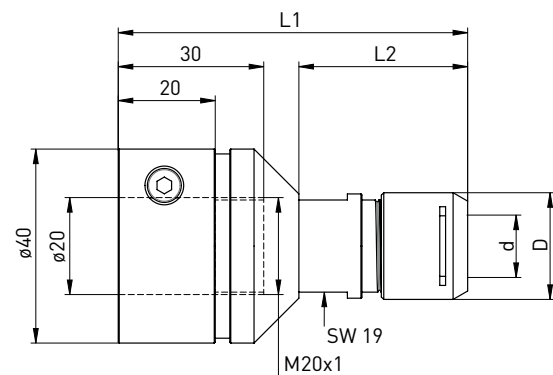


#### Delivered equipped:

**Clamping nut** (350020114), **Spacer rings 4pc.** (350016004)

Order No.	D	d	L1	L2	L3
350130046	20	10	73	35	20

### Adapter $\varnothing 20$ on ER16



#### Delivered equipped:

**Mini clamping nut Silent ER16** (350020116)

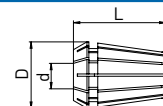
Order No.	D	d	L1	L2
350130047	22	ER16	73	62

### Accessories Adapter $\varnothing 20$ on $\varnothing 10$

Order No.	Name - $\varnothing$
350016004	Spacer ring $\varnothing 20$ x $\varnothing 10$ x 3
350020114	clamping nut $\varnothing 18$ x 4 - M10 x 0,75
350040050	Hook wrench 16-20 mm

### Accessories Adapter $\varnothing 20$ on ER16

Order No.	Name
350125116	Mini clamping nut SILENT ER16
350126116	Clamping wrench for Mini clamping nut SILENT ER16



### Order No. Name

3501217\*\* Collet DIN 6499 ER16 \*\* $\varnothing 1$ -10mm

\*\*[Please complete the order number with the two-digit number that defines the diameter!] e.g. for  $\varnothing 1$  -> last digit 01 (350121701) for  $\varnothing 10$  last digit -> 10 (350121710)



μGrind HPS 20 // HPS 20L



μGrind Nann 3409E



μGrind HSK



μGrind Hydro



Our Clamping and balancing technology catalogue contains all our quick-acting chucks.

In North America contact:

**Toolroom Solutions Inc.**

8824 Old Block House Ln  
Spotsylvania, VA 22551 USA

Tel: +1 (540) 940-5977  
Email: [info@toolroom.solutions](mailto:info@toolroom.solutions)  
Web: [www.toolroom.solutions](http://www.toolroom.solutions)

**GDS**<sup>®</sup>  
Made in Germany

GDS Präzisionszerspanungs GmbH  
Endelbergstrasse 8  
D - 72131 Ofterdingen

