**OFFICE**

8824 Old Block House Ln
Spotsylvania, VA 22551-3512

PHONE

+1-540-940-5977

EMAIL

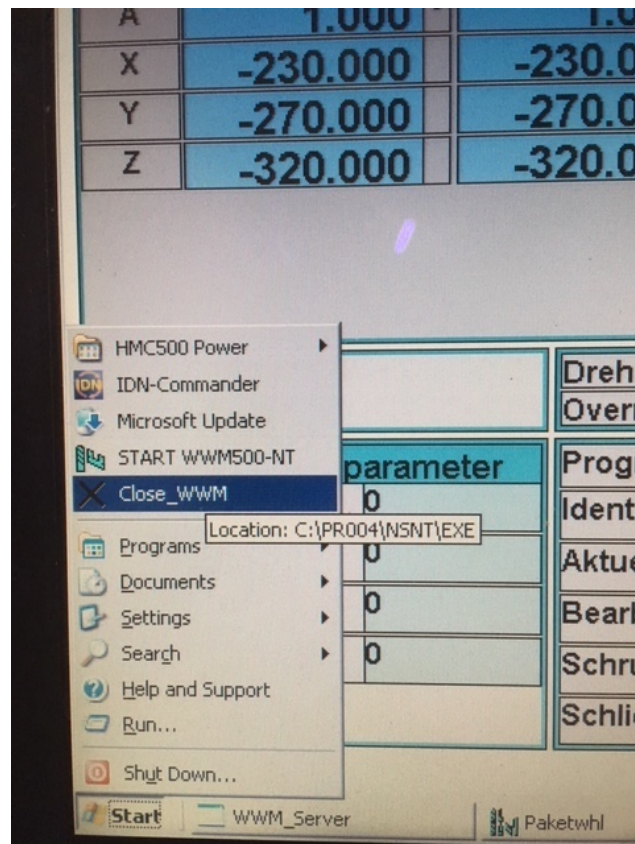
ed@toolroom.solutions

Saving the drive data from Indramat/Bosch Rexroth drives to the hard drive of the HMC 500/600 control

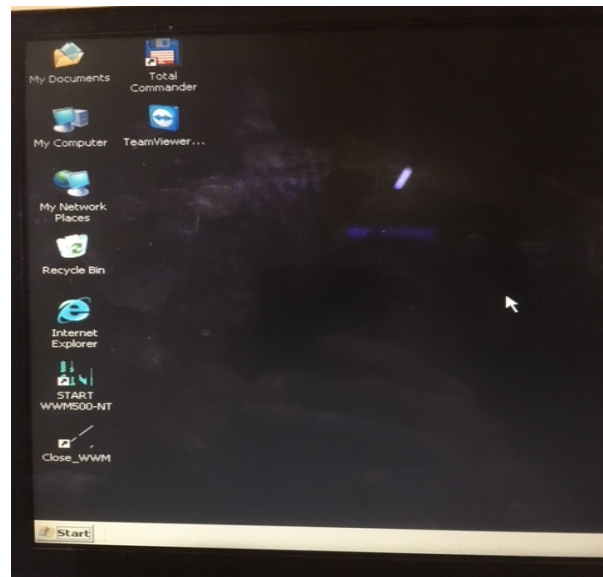
Before you work on your drive system, or once every year, we recommend saving the drive data (axis parameters) stored in the PCMCIA card (personality card) in each drive to the correct folder on your hard drive. It saves a lot of time if you ever have to replace a drive.

Follow these steps to make a proper safety copy:

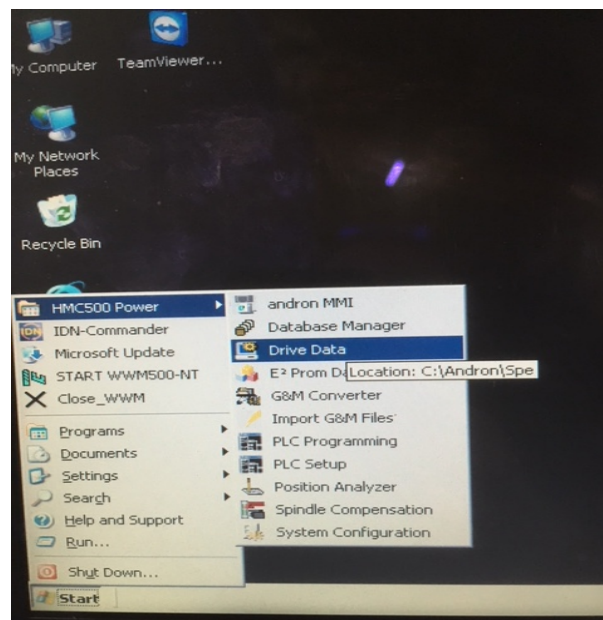
1. Connect a keyboard and boot your machine up normally. Turn the drives on and do a "Ref all Move." If all the drives finished the move to the machine reference position, turn the drives off with the red button on the lowest part of your front panel.
2. Close Tool Studio or Walter Window Mode (WWM) completely. The command for closing WWM is shown below:



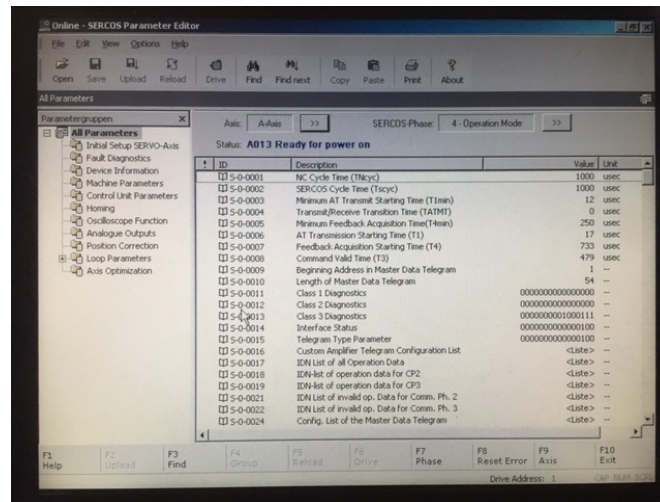
3. From the empty desktop



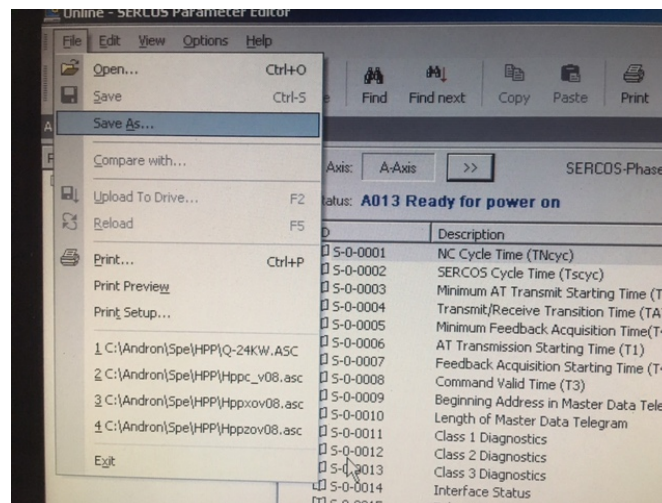
4. Open up the “HMC 500 Power - drive data” software



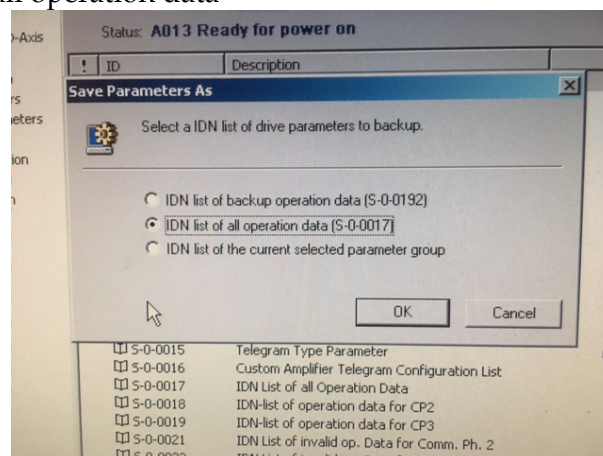
- The drive data software gives you access to every single drive and the parameter set. The default page is always the lowest address – “axis A” (If you need a different one select it with “F9 – axis”)



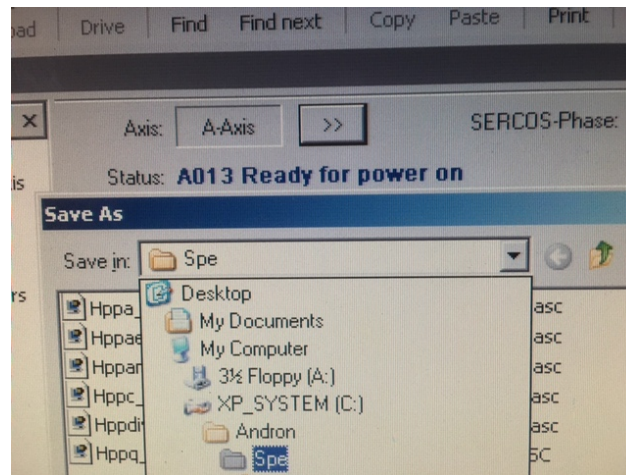
- To save the drive data, use the pull down menu, which you open with “Alt” and then “File – Save As...”



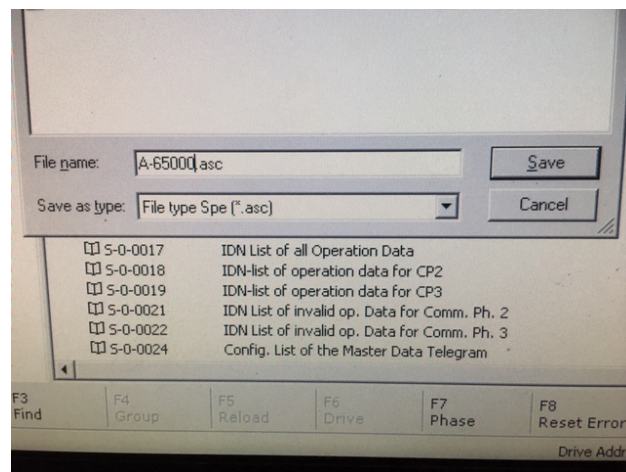
- The drive data software will ask you which parameter you want to save. Select the center one: “IDN list of all operation data”



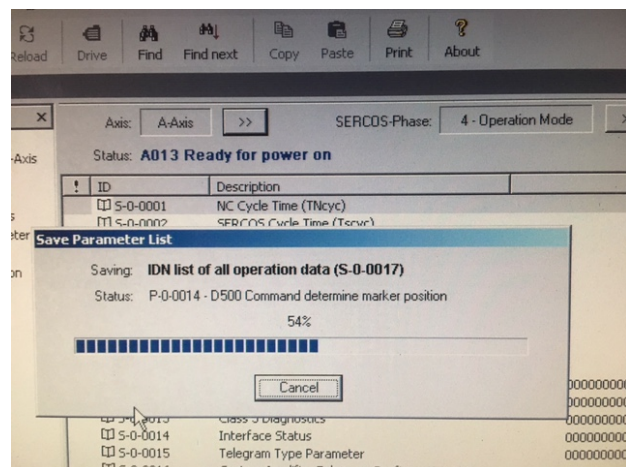
8. Select the correct path for the copy – C:\Andron\Spe if the software does not default to it!



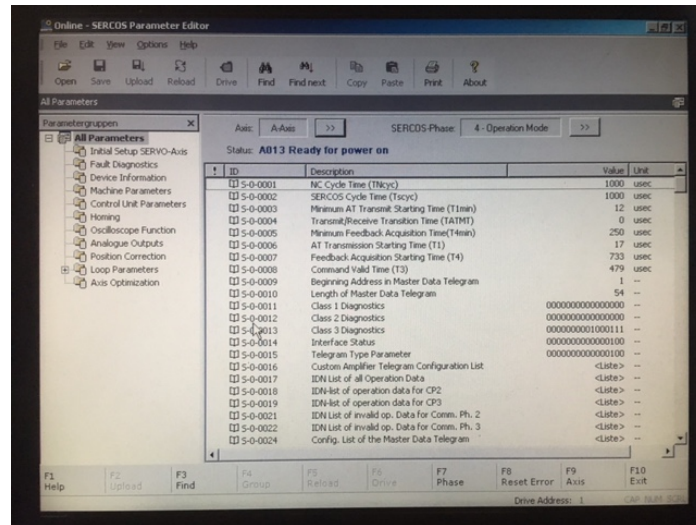
9. Give the file a clear name. For example #axis# - #machine number# - optional #date# (In our example it's the A axis of machine 65000)



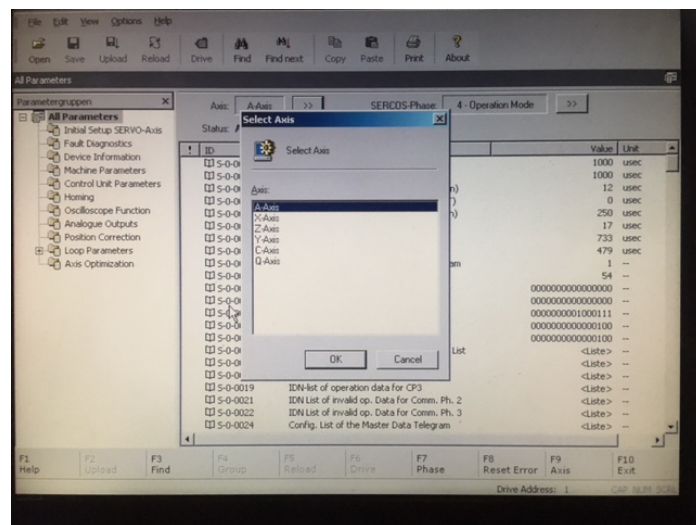
10. Select "Save" and start with the Enter command. A window pops up in which a bar runs from left to right while the parameters are being saved.



11. When the save is finished the screen goes back to the regular axis page



12. Select the next axis with "F9-axis" and start at Step 6 again



13. Work down the axis list until all axes are saved. A regular machine has 6 axes and a loader machine has 8

Now you have a proper backup of all your drive data on the hard drive.